



Installation Instructions

Complete Set Active Sound incl. Soundbooster

v1.4 (06.04.2022)

Contents

1	Liability Exclusion	3
2	Copyright	4
3	General notes	4
4	Safety Instructions	5
5	Requirements for the intended use	5
6	How to connect a cable to another	6
7	Note Cable Inscription/Color	7
8	Assembly Instruction	8
9	Note	9
10	Assembly Note	9
11	Disassembly trim parts on driver's side	10
12	Installation sound generator, Version 1 - 4 cylinders 2.0 Liter	12
13	Installation sound generator, Version 2 - 6 cylinders	13
14	Connection CAN high + low / ground / push button	14
15	Cable routing to the sound generator	15
16	Software	17
17	Software	18
18	Software	19
19	Important Information Sound Booster	20
20	Configuration	20
21	Connection / Troubleshooting cable set	21

1 Liability Exclusion

Dear Customer,

Our cable sets are developed according to the connection- and circuit diagrams of the corresponding car manufacturers. Before the serial production, the cable sets will be adjusted and tested on an original vehicle. Therefore, the integration into the vehicle electronics follows the guidelines provided by the car manufacturer. Our installation instructions correspond to what is common in the vehicle electric/electronic regarding the required pre-understanding and the accuracy of the description in text and picture. They have proven its worth in practice hundreds of times.

If you should experience any difficulties while installing one of our products, we are available to provide support via phone or email. Additionally, we offer you to execute the installation in our workshop in Bad Segeberg.

Costs, arising from third parties assigned with the installation of our products, are not being covered by us. We will only compensate the proven costs of the assembly and the costs of the disassembly of the defective product, if it turns out that there is an issue with our product. We limit the reimbursement of costs up to 110 Euro gross and reserve the right to verify the claim in our workshop in Bad Segeberg. The costs for shipping will be refunded if the claim is justified.

We made the experience, that every professional workshop that is equipped with the necessary diagnostic devices, the diagnostic software and the manufacturer's circuit diagrams, is able to find any possible defects in one of our products in a short period of time. The assembly and disassembly including troubleshooting the issue should therefore only take up to 60 minutes.

We also made the experience, that many professional workshops are not able to cope with the manufacturer's circuit diagrams and can't read common wiring schemes, which results in the calculation of several hours for the simplest installations. You will understand the fact, that we can neither take the risk of finding a reliable workshop for you, nor can we finance the training of the employees of your trusted workshop.

Costs, arising from purchasing missing parts or replacements for defective parts from other suppliers, are covered by us up to the amount that the subsequent delivery would have caused (saved expenses). According to the legal warranty law, there would be no reimbursement right, if there was no deadline for the subsequent fulfilling set or the deadline for a subsequent fulfilling hasn't expired.

That being said, if you have any problems during the installation or operation of one of our products call us, write us an email, send us the product or come by our workshop in Bad Segeberg with your vehicle. We are certain, that we can find a solution for any kind of concern.

Kind regards,

Your Kufatec GmbH & Co. KG Team

2 Copyright

Our installation and operation instructions, installation plans, software and other written and/or pictured documentations are protected by copyright.

The publication or distribution of these documentations is only permitted with a written approval of Kufatec GmbH & Co. KG.

3 General notes

While developing this product, your personal safety combined with the best operating service, modern design and an up-to-date production technique was especially taken into account.

Unfortunately, despite the utmost care injuries and/or damages might occur due to improper installation and/or use.

Therefore, please read the following instruction manual fully and thoroughly and keep it!

All articles of our production line pass through a 100% check – for your safety and security.

We reserve the right to carry out technical changes which serve the improvement at any time.

Depending on each product and purpose, it might be necessary to check each country's legal regulations before installing and starting it.

In case of warranty claims, the product has to be sent back to the seller in the original packaging with the attached bill of purchase and detailed defect's description. Please, pay attention to the manufacturers return requirements (RMA). The legal warranty directions are valid.

The warranty claim as well as the operating permission becomes invalid due to:

- unauthorized changes to the device or accessories which have not been approved or carried out by the manufacturer or its partners
- opening the casing of the device
- repairing the device on one's own
- improper use/operation
- brute force to the device (drop, willful damage, accident etc.)

During the installation, please pay attention to all safety relevant and legal directions. The device should only be installed by trained personnel or similarly qualified people.

In case of installation problems or problems concerning the functionality of the device, limit the time to approx. 0.5 hours for mechanical or 1.0 hours for electrical troubleshooting.

To avoid unnecessary costs and time loss, send in an immediate support request via the Kufatec contact form (<http://www.kufatec.de/shop/de/infocenter/>).

In case of, let us know the following:

- Car chassis number/vehicle identification number
- Five-digit part number of the device
- Exact description of the problem
- Steps you have taken to solve the problem

4 Safety Instructions

The installation should only be performed by trained personnel. Only perform installations while in a voltage-free state. For example, disconnect the battery. Please pay attention to the instructions provided by the manufacturer.

- Never use bolts or nuts from the car's safety devices for installation. If bolts or nuts from the steering wheel, brakes or other safety devices are used for installation of the device, it may cause an accident.
- Use the device with a DC 12V negative ground car. This device cannot be used in large trucks which use a DC 24V battery. If it is used with a DC 24V battery, it may cause a fire or accident.
- Avoid installing the device in places that would restrict you from driving safe or where it could damage the car's other fittings.
- This device should only be used in combination with the mentioned vehicles. Only connections described within this instructions guide are allowed or required to use for installation.
- For damages caused by faulty installation, unsuitable connections or inappropriate vehicles, Kufatec GmbH & Co. KG assumes no liability.
- We advise you that these devices process data from the MOST – protocol of the vehicle. As the supplier of this device we don't know the overall system you are working with. If your device causes damage, due to other changes made to the vehicle, Kufatec GmbH & Co. KG assumes no liability.
- Kufatec GmbH & Co. KG supplier does not guarantee the use of the product for changes within a new vehicle series.
- If the car manufacturers don't agree with the installation of our device by reason of warranty, Kufatec GmbH & Co. KG assumes no liability. Please, check conditions and warranty before you begin the installation.
- Kufatec GmbH & Co. KG reserves the right to change the device specifications without notice.
- Subject to errors and changes.

5 Requirements for the intended use

Only use this device in its intended area.

In case of unprofessional installation, improper use or modification, the permission for the operation and the warranty claim will expire.

6 How to connect a cable to another

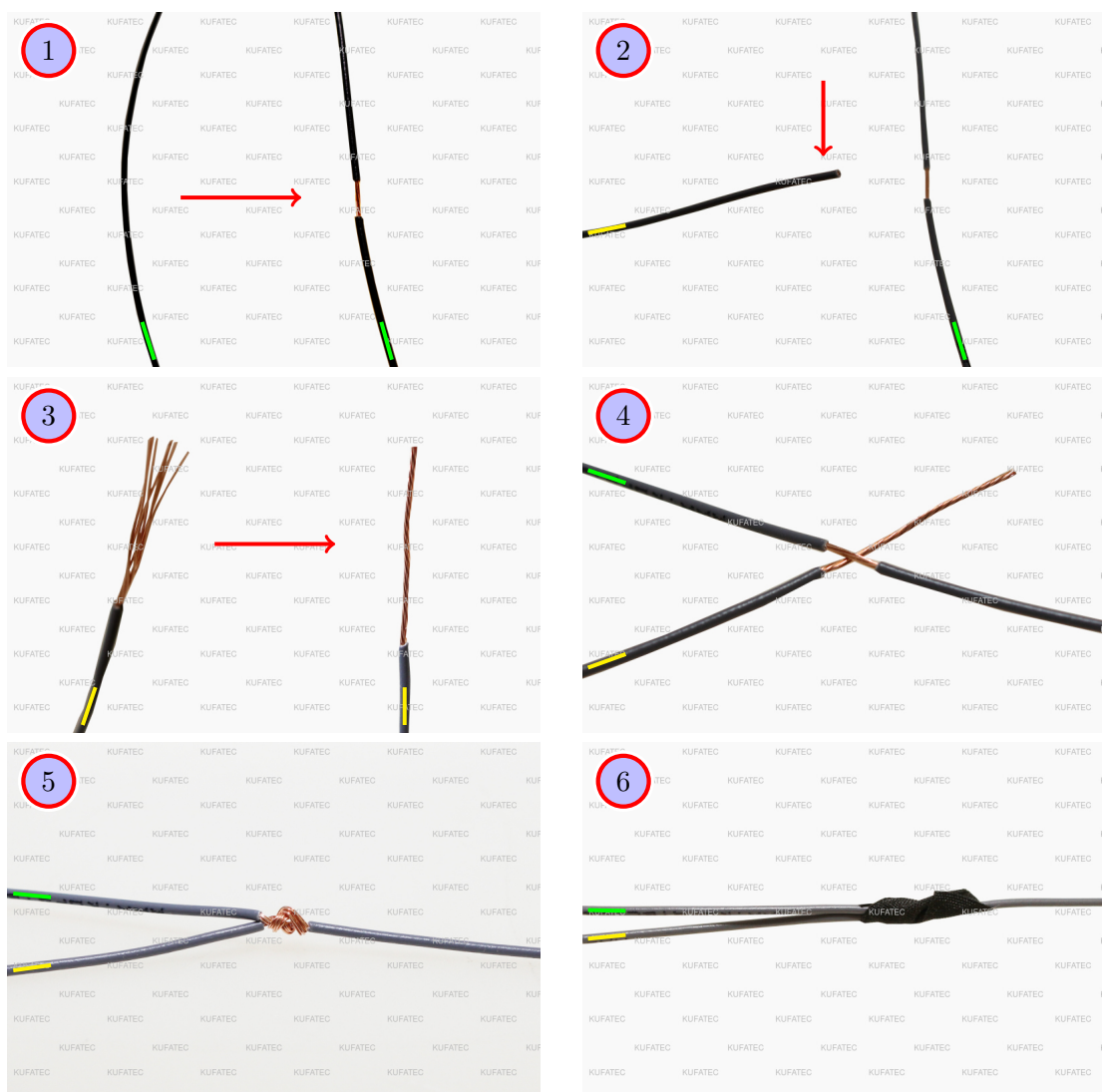


Figure 1: How to connect a cable to another

Table 1: How to connect a cable to another

No.	Work step	Note
1	Take the cable of the vehicle, to which you want to connect, (green marked here) and strip the insulation at one point with a suitable tool (cable stripper/cutter knife).	
2	Now take the cable of the cable set, which you want to connect, (yellow marked here) and strip the insulation at the end.	
3	Twirl the wires of the stripped cable together.	
4	Place the end of the cable you want to connect under the stripped point of the cable of the vehicle...	
5	... and wrap the cable you want to connect around the cable of the vehicle.	
6	Lastly, stick insulating tape around the connection point. Make sure that the isolation is put onto the connection professionally to prevent corrosion.	

7 Note Cable Inscription/Color

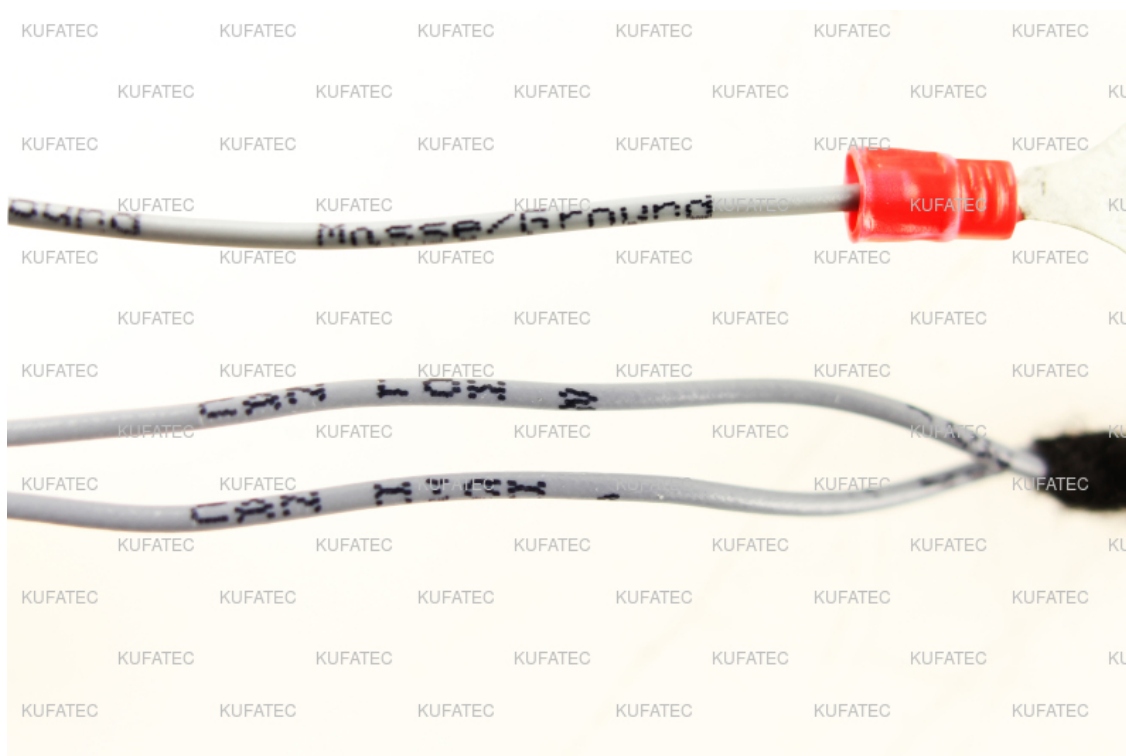


Figure 2: Cable Inscription

If the cable set consists of colored cables, connect the cables according to the color. If all cables of the cable set have the same color, connect the cables according to the cable inscription.

8 Assembly Instruction

The following illustration shows the cable routing as well as the position of the individual components:

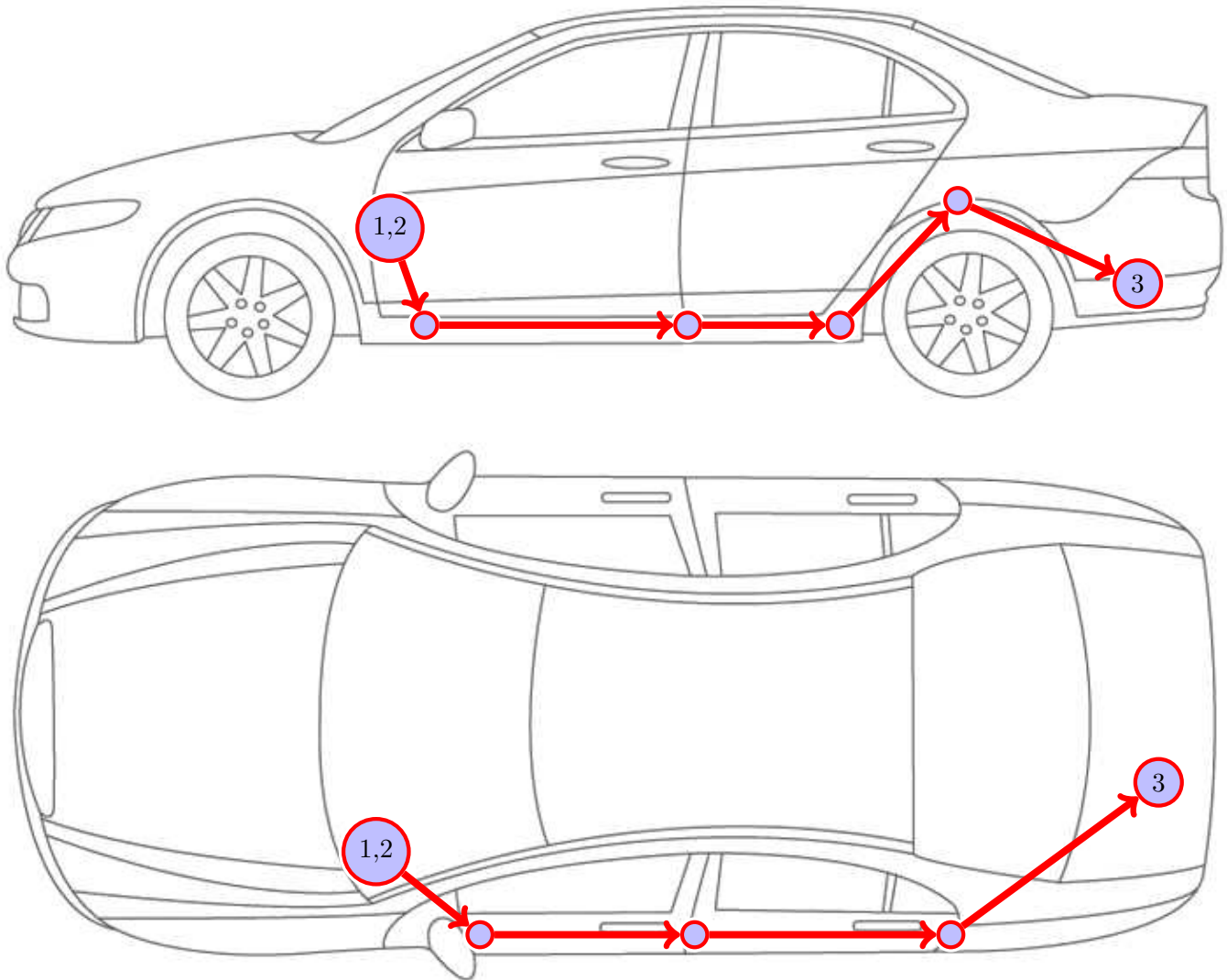


Figure 3: Vehicle overview

- 1 Control unit for sound generator
- 2 Pushbutton
- 3 Sound generator

Please be aware that this overview is only for **illustration purposes**. Always lay the cable set in the **most convenient and shortest way** possible. For a detailed description of the cable routing, please refer to the relevant sections of the following manual.

9 Note

Make sure that there's enough space at the described position. If there is no space please cancel the installation and contact our technical support.

The use of a sound booster is not permitted without registration in the vehicle papers, in the area of the german StVZO. The noise emission of the vehicle is increased by this retrofit. The regulations of the StVZO must be observed. It is therefore recommended to ask for a specific registration option at the responsible TÜV/DEKRA office before retrofitting. Outside Germany, please observe the laws on vehicle licensing applicable in your country.

10 Assembly Note

Important note for the assembly

- The vehicle used for the assembly instruction was a **Audi A5 F5**. We would like to point out, that the disassembly of the individual parts can vary depending on the type of vehicle. Please make sure to keep that in mind.

11 Disassembly trim parts on driver's side

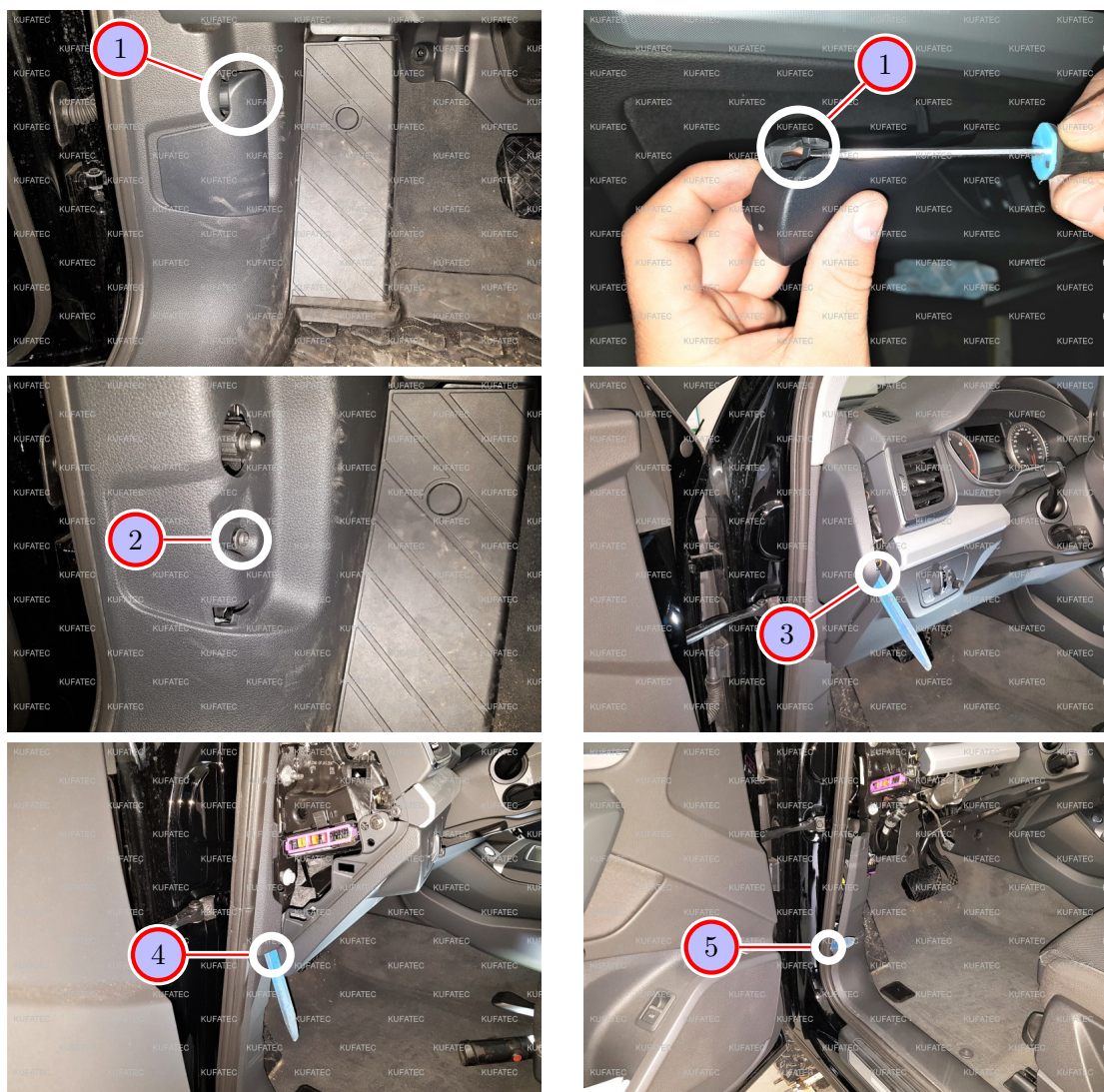


Figure 4: Disassembly trim parts on driver's side

Table 2: Instructions for the disassembly of the trim parts on driver's side

No.	Work step	Note
1	For removing the bonnet release, you have to pull the locking out slightly and then push out the clip with a screwdriver.	
2	Afterwards loosen and remove the screw, which is located behind.	1x T20
3	Loosen the lateral covering from the dashboard by using an assembly lever.	
4	Loosen the lateral elongated plastic strip at the A-pillar by using an assembly lever, afterwards you can remove the strip.	
5	Loosen the front door sill trim by using an assembly lever.	

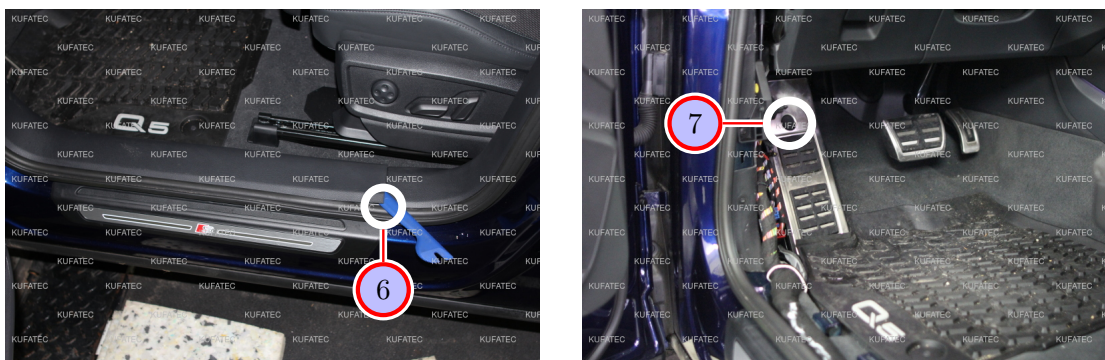


Figure 5: Disassembly trim parts on driver's side

Table 3: Instructions for the disassembly of trim parts on driver's side

No.	Work step	Note
6	Loosen and remove the door sill trim by using an assembly lever.	
7	Loosen the marked screw and remove the covering of the fuse box afterwards.	1xT30

12 Installation sound generator, Version 1 - 4 cylinders 2.0 Liter

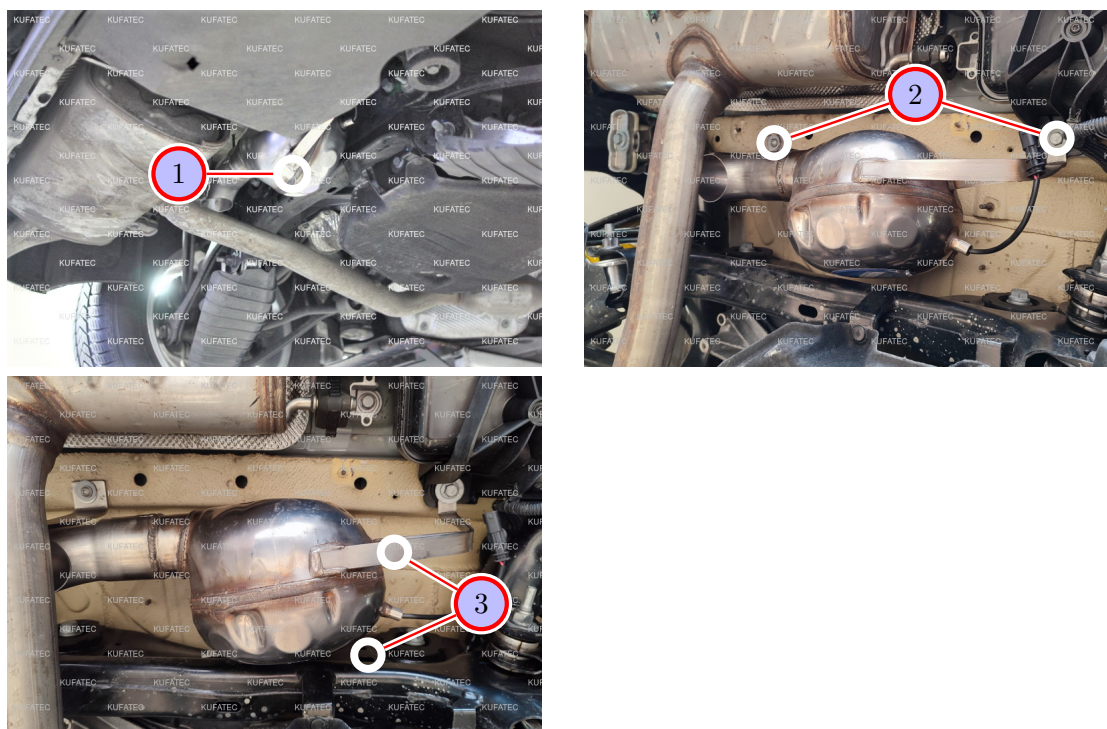


Figure 6: Installation sound generator, Version 1 - 4 cylinders 2.0 Liter

Table 4: Instructions for the installation of the sound generator, Version 1 - 2.0 Liter

No.	Work step	Note
1	Please fasten the sound generator at the underbody of the vehicle, as marked on the picture. The installation position for the sound generator is situated directly behind the AdBlue-tank.	
2	Fix the soundbooster with the two marked screws at the underbody.	1x10er, 1x13er nut
3	Protect the sound generator with the delivered steel cable at a suitable place at the underbody.	

13 Installation sound generator, Version 2 - 6 cylinders



Figure 7: Installation sound generator, Version 2 - 6 cylinders

Table 5: Instructions for the installation of the sound generator, Version 2 - 6 cylinders

No.	Work step	Note
1	Attach the sound generator to the underbody of the vehicle (driver's side). In order to mount the Soundbooster, the mounting bracket must be adapted to the installation location using workshop tools.	
!	Secure the noise generator with the steel cable supplied at a suitable place on the underbody.	

14 Connection CAN high + low / ground / push button

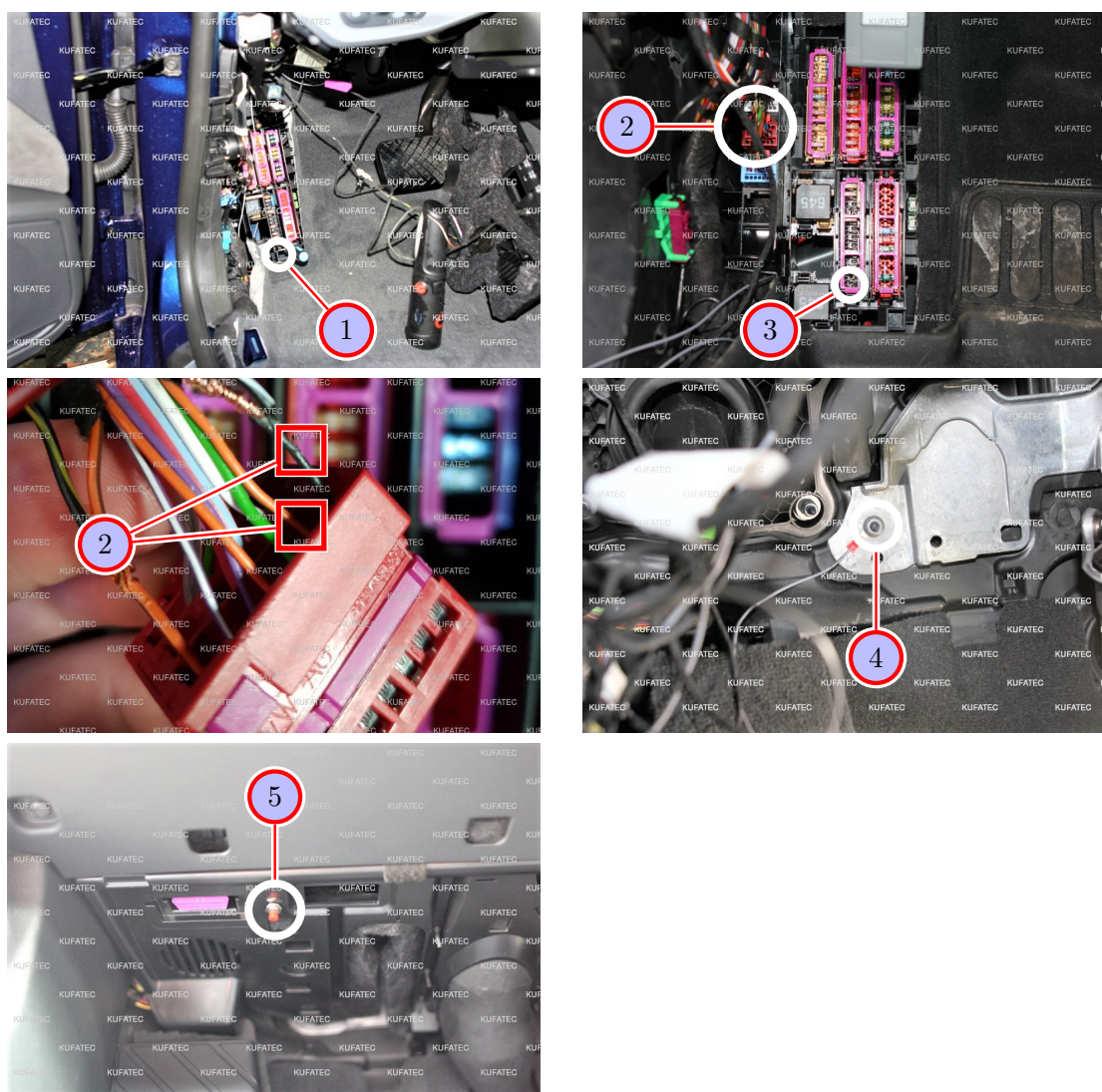


Figure 8: Connection CAN high + low / ground / push button

Table 6: Instructions for the connection CAN high + low / ground / push button

No.	Work step	Note
1	The fuse box is located under the front foot tray.	
2	Remove the red plug (CAN-bus) out of the plug-in connection and pull it downwards. Please connect CAN high + CAN low with the red plug as follows: CAN high (black/white) to the black cable Pin 1 CAN low (black/yellow) to the orange/brown cable Pin 2	
	If the provided cable set consists exclusively of grey wires, connect the cables according to the wire inscription at the end of the cable.	
3	Place the cable for ignition lead (red/white) in a free fuse spot and protect the spot with a 20 ampere fuse afterwards. Please measure with a multimeter, on which fuse spot ignition lead is placed.	
4	Connect the ground cable (brown) with the marked ground spot. Connect the control unit as well as the module with the cable set and place it behind the dashboard carrier with cable ties respectively.	
5	Please drill a hole for the push button at the marked position and install the button at that position afterwards.	7mm

15 Cable routing to the sound generator

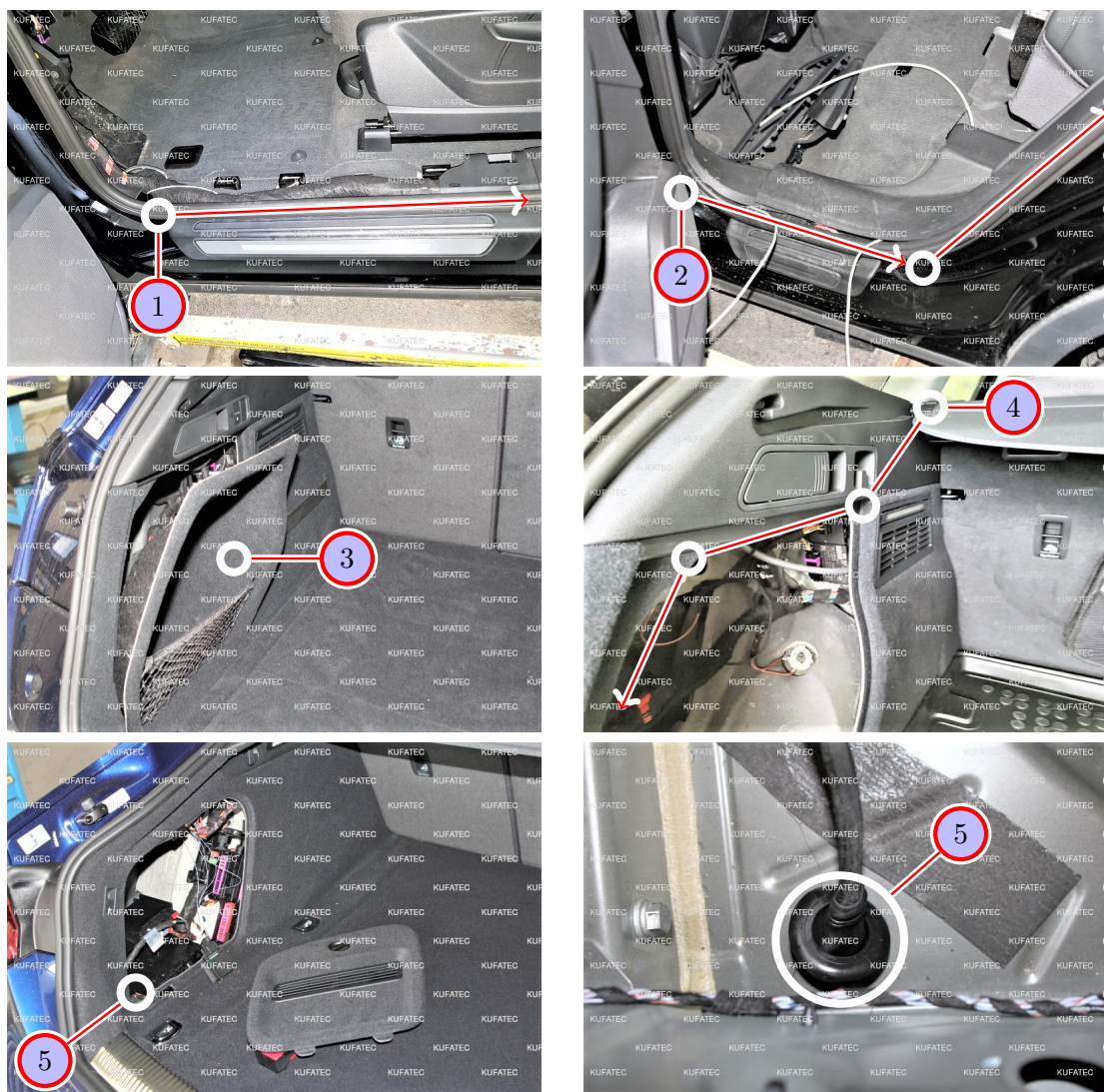


Figure 9: Cable routing to the sound generator

Table 7: Instructions for the cable routing to the sound generator

No.	Work step	Note
1	For the cable laying to the sound generator please route the cable under the front kick plate along to the B-pillar, by using a push-through-aid.	
2	Route the cable along the rear kick plate to the C-pillar. Loosen the lateral covering of the backseat slightly and pull the cable forward to the backseat.	
3	Take the maintenance flap out by easy removal.	
4	Pull the cable, which comes from the backseat, through the side trim to the maintenance flap, by using a push-through-aid.	
5	At the bottom of the maintenance flap is a rubber grommet, pull the cable through it until to the underbody.	



Figure 10: Cable routing to the sound generator

Table 8: Instructions for the cable routing to the sound generator

No.	Work step	Note
6	Pull the cable at the underbody out of the rubber grommet and route it along the underbody until the installation position of the sound generator.	
7	Fasten the cable with appropriate workshop material and connect the cable with the soundbooster afterwards.	

16 Software

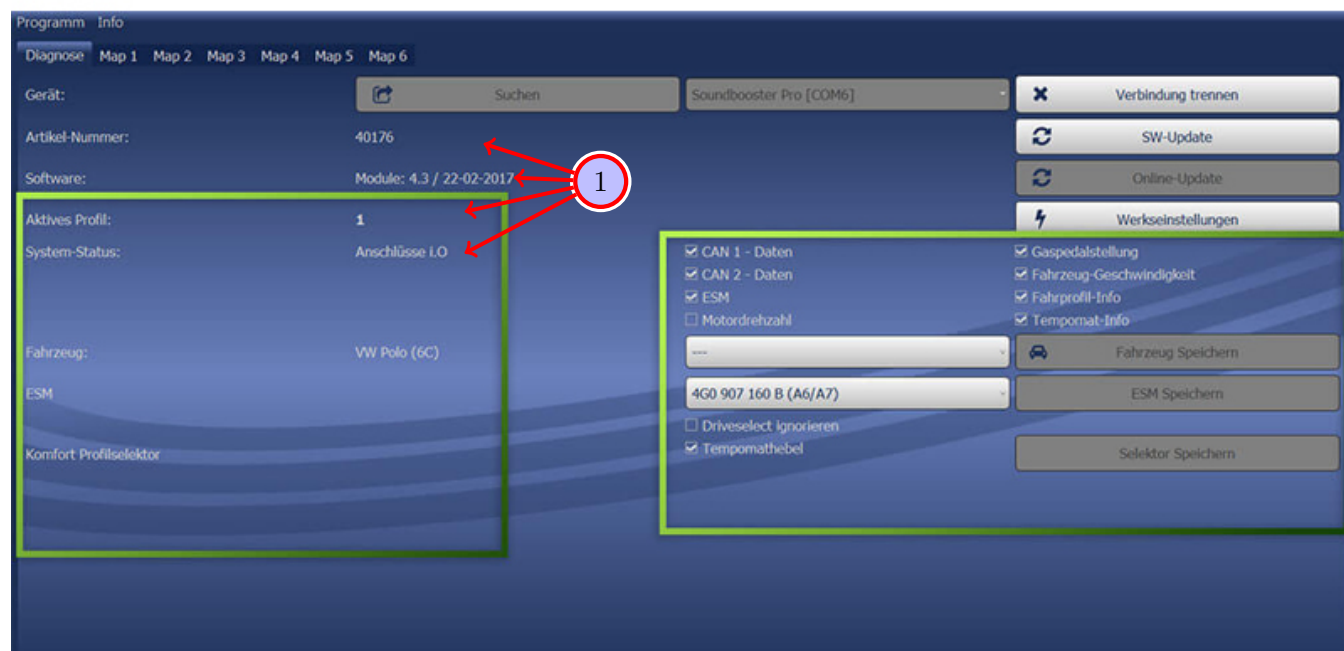


Figure 11: Software

Table 9: Notes for the software

No.	Work step	Note
1	If the system does not work after the installation, please check if the system was installed correctly by having a look on the following link: https://www.sound-booster.com/en/debugging.html . Our Sound Booster Software for PC / Mac should be used for the commissioning or further debugging:	
	Step 1: Download the appropriate software via the following link: https://www.sound-booster.com .	
	Step 2: Turn the ignition of the vehicle on and only then connect the PC / Mac with a USB-cable to our module. It is important to check beforehand if plus and minus are connected correctly. If this is not the case, it could result in a damage to the computer or to the control unit.	
	Step 3: Start the downloaded software and click on search first and then on connect. You will be automatically forwarded to the diagnosis site, on which you can see the following things at a glance:	
	Software: Software version / creation date	
	Active profile: The actually activated profile is indicated here.	
	Vehicle: The automatically identified vehicle is indicated here.	
	System status: Here you can tell, if the connections are correct.	

17 Software

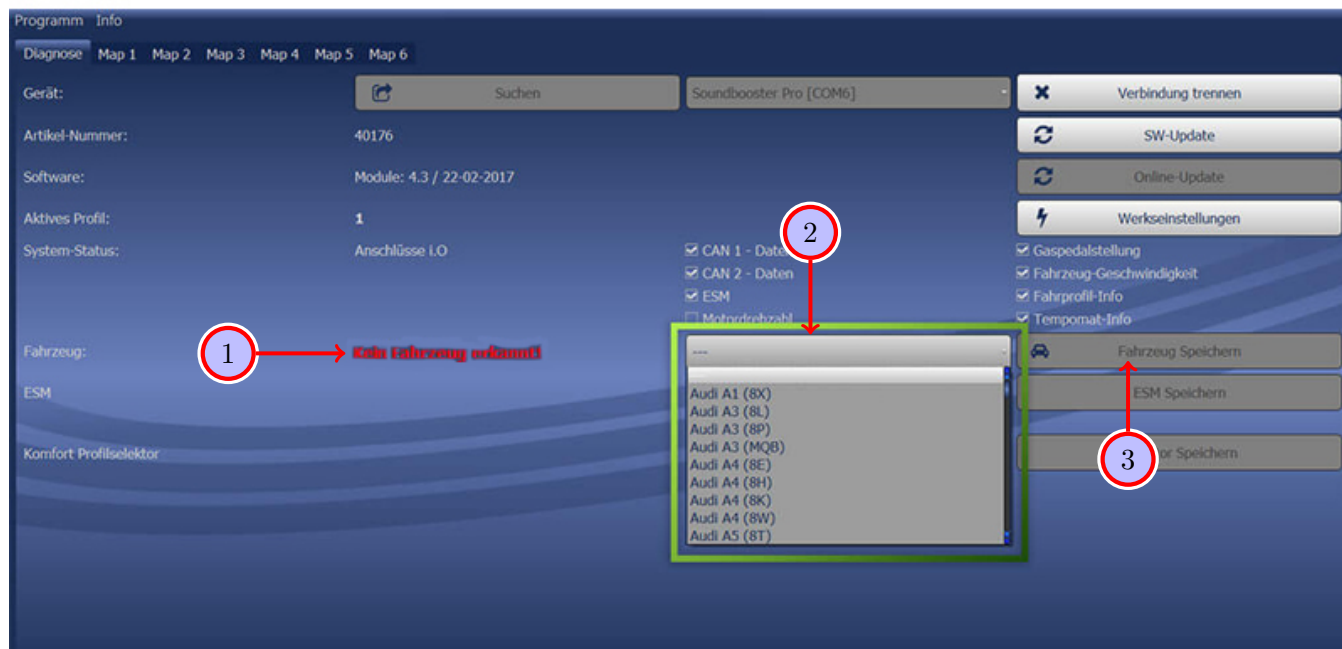


Figure 12: Software

Table 10: Notes for the software

No.	Work step	Note
1	If no current vehicle is identified, you have to select the vehicle via the manual selection as follows:	
2	Open the dropdown-menu, search for your vehicle and select it.	
3	Click on Save Car to permanently save the vehicle to the module.	
	If you don't find your vehicle in the list, it might be necessary that the software has to be adapted to your vehicle. In that case, please contact us via e-mail: info@kufatec.de or by phone: +49 (0) 4551 / 80 810 888. We will make an appointment with you, where we will adapt the software to your vehicle per Team Viewer (remote maintenance).	

18 Software

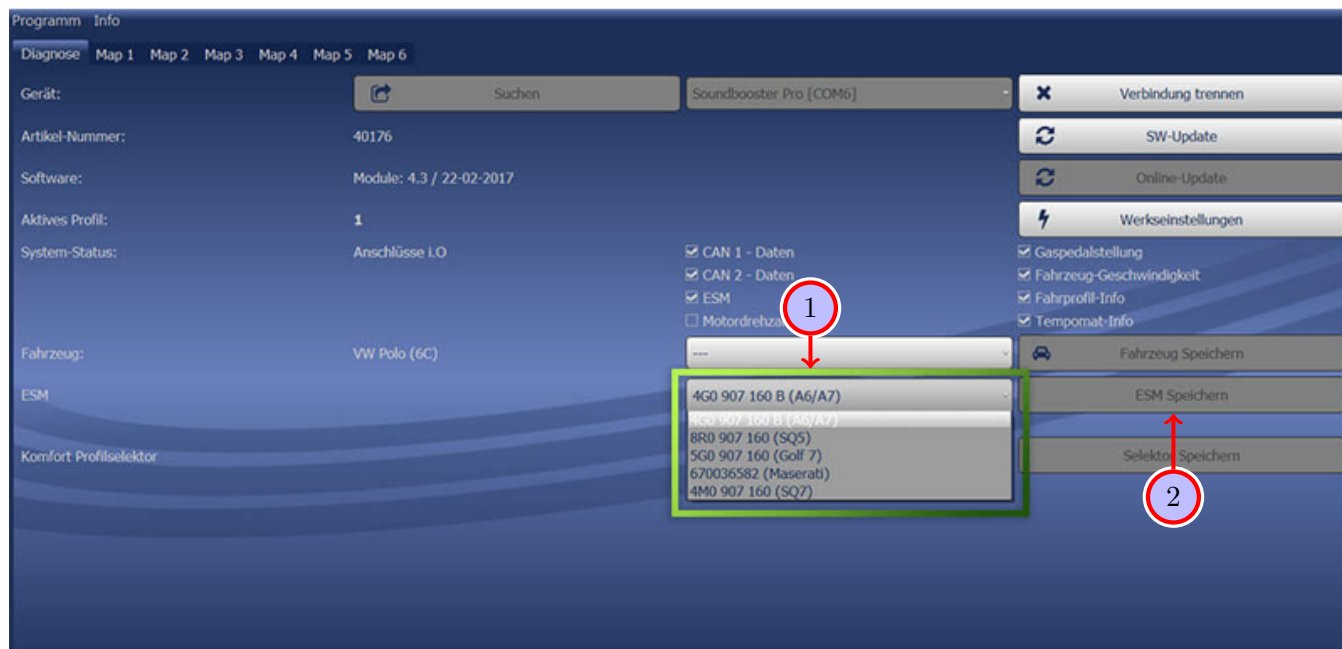


Figure 13: Software

Table 11: Notes for the software

No.	Work step	Note
1	You also need to check if the right ESM is selected in our software: Open the dropdown-menu, search for the correct ESM and select it.	
2	Click on Save ESM to permanently save the ESM to the module.	
3	For example, if you ordered a complete set with a Audi control unit you need to select the ESM 4G0 907 160 B (A6/A7) . If you installed the Maserati control unit instead of the Audi control unit you need to select the ESM 670036582 (Maserati) . If the system does not work after all please get in contact with us via e-mail: info@kufatec.de or by phone: +49 (0) 4551 / 80 810 888. We will check the issue as soon as possible.	

19 Important Information Sound Booster

Please use suitable screws that can withstand high loads of impact to attach the sound generator. In order to avoid loosening of the screws due to the vibration, please secure the screws with appropriate factory material e.g. threadlock. Please additionally check the stability of the Sound Booster regularly and if necessary retighten the screws. In case of non-compliance we do not assume liability for possible damages.

After a successful installation we recommend to cover the sound generator with a zinc spray. Make sure that you cover the opening of the sound generator so that the zinc spray can't get inside the sound generator.

As additional safety the delivered steel cable and the retaining clips have to be attached to the Sound Booster as well as at a suitable position to the car. This safety cable is an additional security should the tightening screws be released due to the vibration.

20 Configuration

Configuration

If a Bluetooth enabled module is available, the app „**Kufatec-Link**“ is required for the configuration. The app is available to download for free for IOS as well as for Android.

- For IOS in the Apple Store:

<https://apps.apple.com/app/kufatec-link/id1401203449>



- For Android in the Google Play Store:

<https://play.google.com/store/apps/details?id=com.kufatec.ktcLink>



21 Connection / Troubleshooting cable set

Soundbooster Version 1 - 2.0 Liter

Audi Q5 FY

- **Audi module 8-pole MiT to:**
 - Pin 2 to ground
 - Pin 4 to pin 2 (fuse carrier 2-pole MPT)
 - Pin 7 to pin 2 (soundbooster 2-pole H9 Seal)
 - Pin 8 to pin 1 (soundbooster 2-pole H9 Seal)
 - Pin 1 to pin 15 (Can low / Kufatec module 18-pole MQS)
 - Pin 3 to pin 16 (Can high / Kufatec module 18-pole MQS)

- **Fuse carrier 2-pole MPT to:**
 - Pin 2 to clamp 15 (ignition plus)

- **Kufatec module 18-pole to:**
 - Pin 4, 13 to pushbutton
 - Pin 9 to ground
 - Pin 1 to pin 2 (fuse carrier 2-pole MPT)
 - Pin 17 to Pin 2 Can low, orange/brown line (Can gateway)
 - Pin 18 to Pin 1 Can high, black line (Can gateway)

List of Figures

1	How to connect a cable to another	6
2	Cable Inscription	7
3	Vehicle overview	8
4	Disassembly trim parts on driver's side	10
5	Disassembly trim parts on driver's side	11
6	Installation sound generator, Version 1 - 4 cylinders 2.0 Liter	12
7	Installation sound generator, Version 2 - 6 cylinders	13
8	Connection CAN high + low / ground / push button	14
9	Cable routing to the sound generator	15
10	Cable routing to the sound generator	16
11	Software	17
12	Software	18
13	Software	19

List of Tables

1	How to connect a cable to another	6
2	Instructions for the disassembly of the trim parts on driver's side	10
3	Instructions for the disassembly of trim parts on driver's side	11
4	Instructions for the installation of the sound generator, Version 1 - 2.0 Liter	12
5	Instructions for the installation of the sound generator, Version 2 - 6 cylinders	13
6	Instructions for the connection CAN high + low / ground / push button	14
7	Instructions for the cable routing to the sound generator	15
8	Instructions for the cable routing to the sound generator	16
9	Notes for the software	17
10	Notes for the software	18
11	Notes for the software	19