

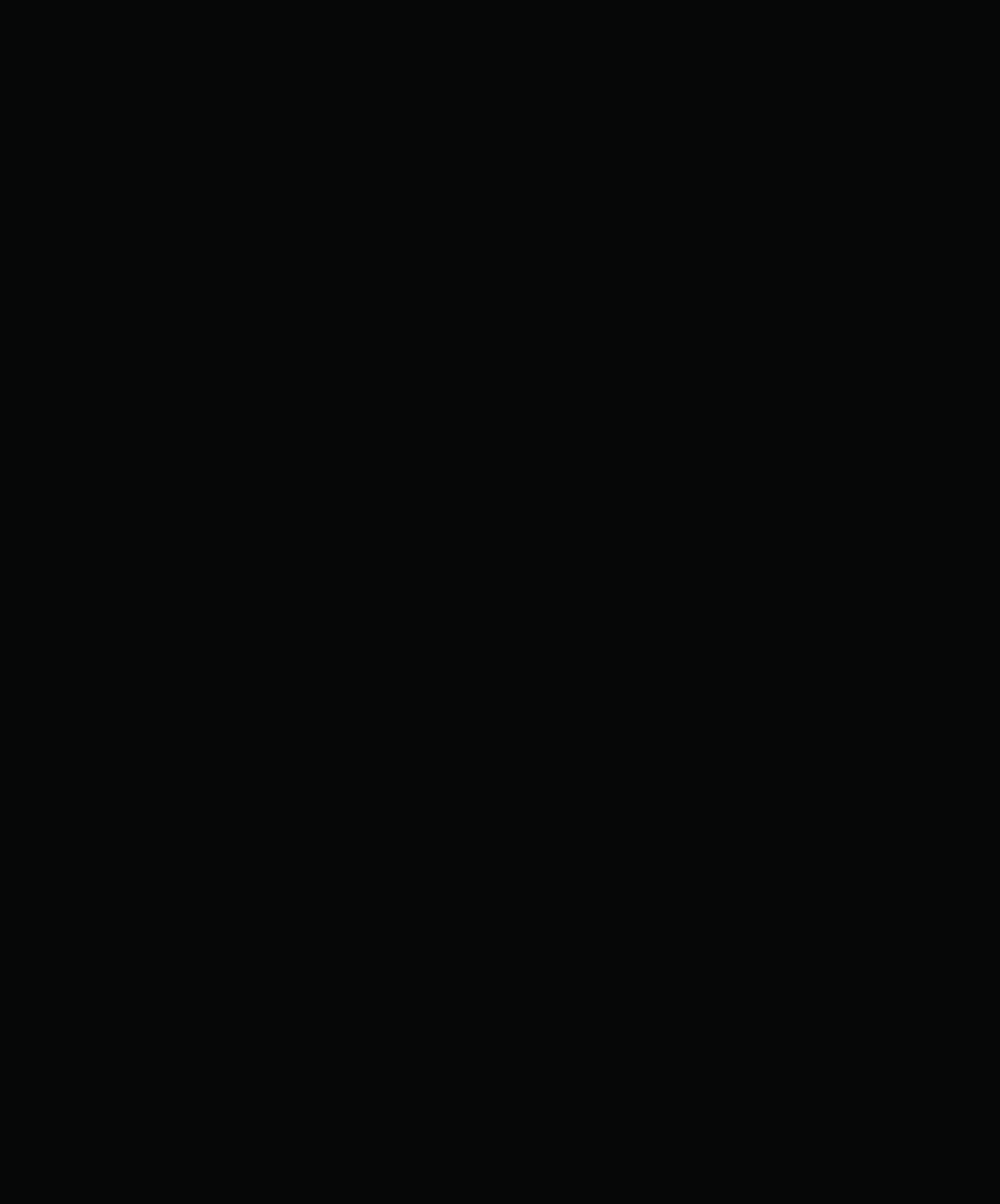
KING *RACING*

HIGH PERFORMANCE BEARINGS

The science of speed



2018-2019 Application Guide



Continuously pushing the limits

Today's race engines make more power than ever before. Yesterday's engine bearing load capacity no longer works today... and tomorrow's race engines will be even more powerful. There's a need to meet these demands with higher bearing design standards and improved materials.

King Racing's XP series of rod and main bearings was developed to meet these challenges through technologically advanced geometrical features and a unique metal structure. Together, they drive the industry to a new level of durability and performance.



pMaxBlack™

Superior load capacity

A unique trimetal structure developed to meet the ongoing demand for increased engine bearing load capacity.

- 24% stronger overlay
- 17% more fatigue resistance
- SecureBond™ - A micro-etch process that improves multi-layer adhesion and structural integrity
- Compatible with all crankshafts

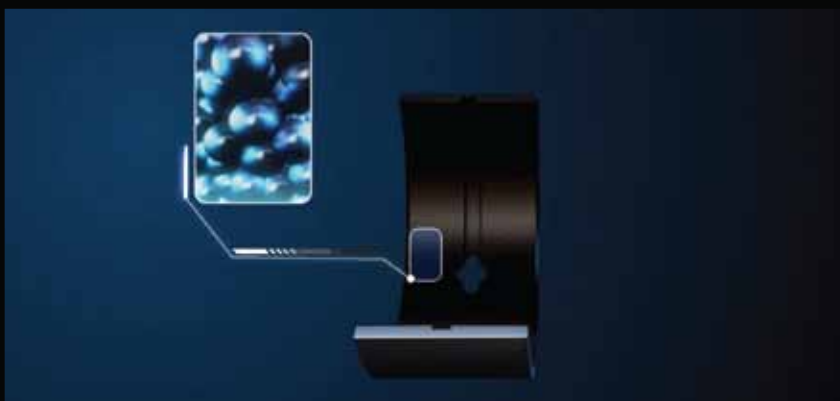
Intermediate layer:

- Copper based alloy strengthened by 4.5% tin
- Industry's highest hardness level - 115HV
- Load capacity - 17,000 PSI

Overlay:

- Strengthened by 5% copper
- Industry's highest hardness level - up to 18.1HV
- Fatigue resistance - 10,200 PSI

Breakthrough hardening technology



King Racing's new hardening technology modifies the overlay molecular structure and creates a fatigue resisting shield, capable of carrying 24% more load.



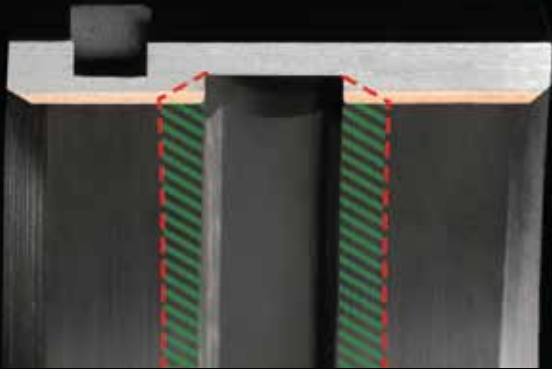


U-Groove™

Greater load surface

A unique oil groove design with a 90° groove shape. **U-Groove™** increases bearing load capacity by expanding the effective surface area, while keeping oil flow capacity intact.

- Better load distribution across the bearing surface
- More stable hydrodynamic lubrication regime
- Greater bearing durability at high RPM's



Bull's Eye Tolerance™

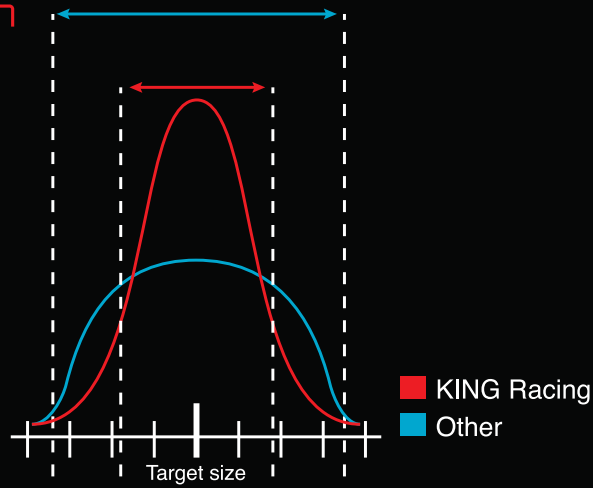
Perfect clearance in every set

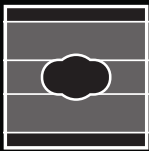
Bull's Eye Tolerance™ sets new standards in bearing thickness consistency. It outperforms the industry's wall thickness tolerance, ensuring the least thickness variation.

- No more purchasing multiple sets or “fishing” for bearings to reach the right clearance
- No need to grind cranks “fat” or “thin”
- No need to adjust housing diameter
- Less taper across the bearing face

The most accurate clearance in the industry

Wall Thickness Variation





ElliptiX™

Improved oil ingress

ElliptiX™ is a newly designed oil slot / oil hole hybrid. It improves oil ingress without affecting the bearing's surface or compromising the load capacity.

- Increases oil passage capacity
- Higher oil supply reliability
- Eliminates need for custom-made oil hole enlargement



RadiaLock™

Optimal crush height and heat transfer

RadiaLock™ is an optimal crush height value determined by a robust R&D process that customizes each bearing crush height to its specific performance demands.

- Optimal press fit
- Improves bearing spin and fretting prevention
- Better heat transfer
- Reduces bearing and housing distortion



EccentriX™

A superior hydrodynamic regime

EccentriX™ is an optimized eccentricity value reached through elasto-hydrodynamic analysis and dynamic calculations. Each bearing's eccentricity value is custom designed to meet specific performance requirements.

- Better oil wedge formation
- More stable hydrodynamic lubrication regime
- Reduces vibration and wear
- Prevents oil film “wiping” under high RPM conditions
- Optimizes load distribution across the bearing surface



pMaxKote™

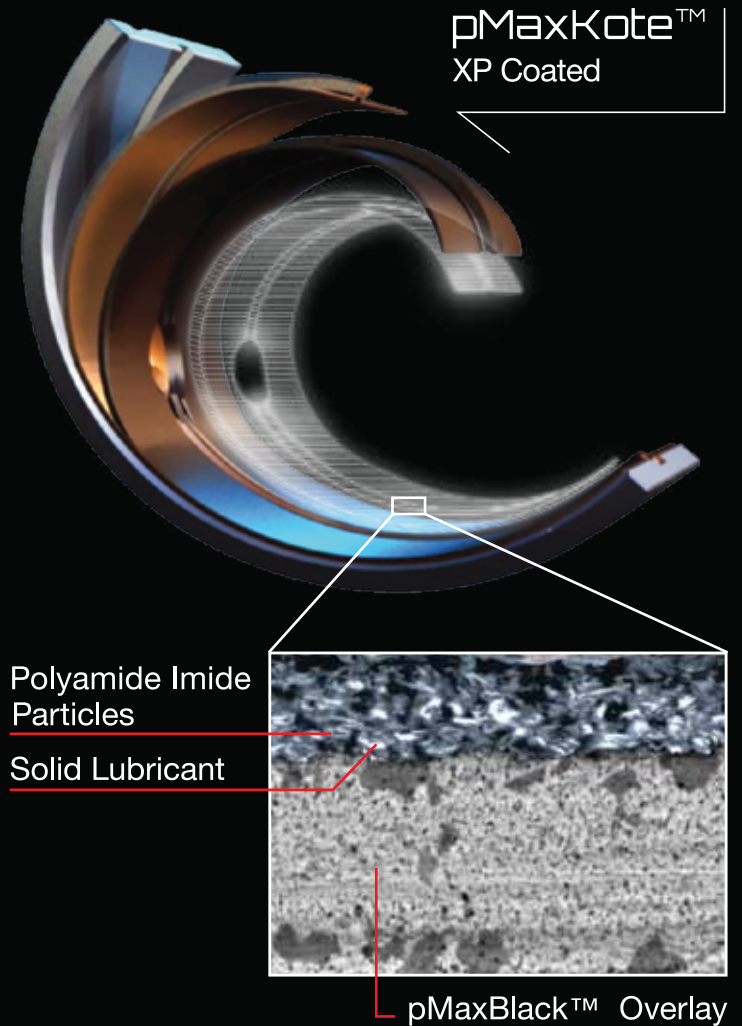
King factory applied nano-composite polymer coating

No added thickness!

King's pMaxKote™ is a revolutionary new approach to coated bearings. This unique polymer coating is applied over King's pMaxBlack™ overlay at the King factory during the bearing manufacturing process. King's pMaxKote™ contains ceramic nano-composite particles that function as a fourth layer to enhance wear resistance. pMaxKote™ does not change the bearings' original precision wall thickness and adds no additional thickness.

pMaxKote™ enhances the following benefits of King XP race bearings:

- Superior seizure resistance
- Superior cavitation resistance
- Superior wear resistance
- Superior protection against oil starvation

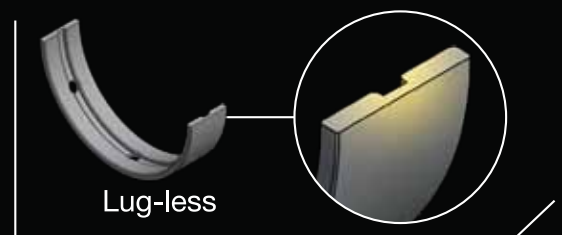
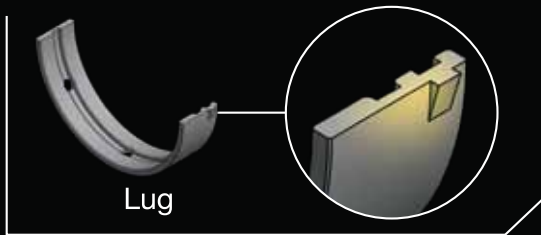


Bearing Lug Innovation

Due to the growing trend among O.E. engine manufacturers to use robotic equipment for engine block assembly, bearings are required to be supplied without locating lugs.

This design leaves the aftermarket bearing installer without the traditional visual marker to aid in the quick, if only approximate, location of the bearing in its housing.

The locating lug does not keep the bearing from spinning in its housing. During engine operation, engine bearings are retained in place due to their crush height - a parameter completely unaffected by the presence or absence of locating lugs. If proper crush is not achieved during assembly, the bearing will spin regardless if there is a lug.



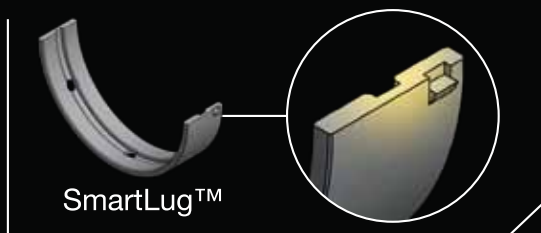
For aftermarket installers, placing lug-less bearings into their correct position requires some additional attention to detail. Shell and housing should be aligned for unimpeded oil hole orientation and for proper centering to avoid bearing-to-crank fillet ride.


Generally, the proper initial procedure for installing a lug-less bearing is to line up the center of the bearing with the center of the connecting rod or main bore. Slight adjustments can then be performed for final optimal location.

SmartLug™ by King

King developed SmartLug™ for high performance bearings. It prevents lug generated oil leaks and maintains full bearing surface in the parting line area for better load capacity and oil film distribution.

SmartLug™ features a traditional locating lug protruding from the back of the bearing -- without removing any material from the working surface side of the bearing. Traditional locating lug designs reduce available load carrying surface area and can cause oil leak paths, especially when located adjacent to an oil groove.



	 HP SERIES	 XP SERIES	 XPC SERIES
Metal Structure	Bimetal Aluminum silicon alloy	Trimetal Copper-lead	Trimetal Copper-lead, Coated
Competition Type	For applications requiring a harder than Babbitt top layer to better resist extrusion & material migration (drag racing, monster truck, tractor pull). Also for all other applications using nodular cast iron crankshafts.	Circle track, drag racing, off-shore, others using steel crankshafts.	Circle track, drag racing, off-shore, others using steel crankshafts.
Load Characteristics	High load/short duration or medium load/long duration	High load/long duration	High load/long duration
Melting Temperature	 450° F	 350° F	 350° F
Load Capacity			
Conformability /Embedability			
Anti-seizure			



Engine		Conrod Bearing Set XP Series	Conrod Bearing Set HP Series	Main Bearing Set XP Series	Main Bearing Set HP Series	Thrustwasher Set	Cam Bearings Set
CUSTOM							
1	1.888" Rod Journal w/ 0.792" length	CR8028XP CR8028XPC CR8028XPDC					
2	327 Crank Journal w/ 350 rod	CR 867XPN					
3	Ford Stroker Kit Chevy 2.100" pin w/ .712" width	CR8005XP					
4	400 Spacer Bearing (use Chevy 350 crank in 400)				MB5224AM (spacer set)		
ALFA ROMEO							
5	1.3L DOHC 8v 101, 105/31, 115	CR4595XP		MB 511XP			
6	1.6L DOHC 8v 105	CR4595XP		MB 511XP			
7	1.8L DOHC 8v 105.48	CR4595XP		MB 511XP			
8	2.0L DOHC 8v AR016	CR4595XP		MB 511XP			
9	2.0L DOHC 8v AR64103, AR67201	CR4595XP		MB 511XP			
AUDI / VOLKSWAGEN							
10	1.6L SOHC/OHC 8v AEA	CR4597XP(w/o lug)		MB5028XP		TW2010AM	
11	1.6L SOHC ABB, ABM, ADA, ADP, DT, JU, PP, RN, SA ('83-'01)	CR4104XP(w/ lug)		MB5566XP		TW2010AM	
12	1.6L 8v AFT	CR4104XP(w/ lug)		MB5269XP		TW2010AM	
13	1.6L SOHC/OHC 8v AKS	CR4104XP(w/ lug)		MB5269XP		TW2010AM	
14	1.6L 8v APF	CR4104XP(w/ lug)		MB5661XP		TW2010AM	
15	1.6L SOHC/OHC 8v AEH, AKL, AWH, AUR, AHL, ARM	CR4104XP(w/ lug)		MB5661XP		TW2010AM	
16	1.8L DOHC 20v AVC	CR4104XP(w/ lug)		MB5269XP		TW2010AM	
17	1.8L DOHC 20v AJL (till '99)	CR4104XP(w/ lug)		MB5566XP (360° oil groove in pos. 4) MB5269XP (180° oil groove)		TW2010AM	
18	1.8L DOHC 20v AJL (from '99)	CR4104XP(w/ lug)		MB5661XP		TW2010AM	
19	1.8L 20v APH	CR4104XP(w/ lug)		MB5269XP		TW2010AM	
20	1.8L SOHC 10v 4B, DR, DS, DZ, JN, JV, JW, NE, NP, PH, PM, PV, RS, RU, SF, SH ('82-'91)	CR4104XP(w/ lug)		MB5566XP		TW2010AM	
21	1.8L DOHC 20v AFY, ADR, ARK	CR4104XP(w/ lug)		MB5566XP (360° oil groove in pos. 4) MB5269XP (180° oil groove)		TW2010AM	
22	1.8L DOHC 20v AQE, ARH, AVV ('97-'04)	CR4104XP(w/ lug)		MB5661XP			
23	1.8L DOHC Turbo AEB ('95-'01)	CR4104XP(w/ lug)		MB5566XP		TW2010AM	
24	1.8L DOHC Turbo AJQ, AMK, APP, APY, AQA, ARZ, AUL, BFV ('97 '06)	CR4104XP(w/ lug)		MB5661XP			
25	1.8L DOHC Turbo AMB, ARX, ARY, AUM, AUQ, AVJ, AWT, BEX, BFB ('00->)	CR4104XP(w/ lug)		MB5661XP			
26	1.8L 8v AAM, ANN, ANP, ADF	CR4104XP(w/ lug)		MB5661XP		TW2010AM	
27	1.8L DOHC 20v ARG, APT, ANB, APG, AWC, AGN, ANB, APX, AGU, APU	CR4104XP(w/ lug)		MB5661XP		TW2010AM	
28	1.8L 20v BAM	CR4104XP(w/ lug)		MB5661XP		TW2010AM	
29	1.8L SOHC/OHC 8v ADZ	CR4104XP(w/ lug)		MB5661XP		TW2010AM	
30	2.0L 8v AGG, AKR, AWF, AWG, BEF	CR4104XP(w/ lug)		MB5269XP		TW2010AM	
31	2.0L SOHC 8v 3A, AAD, AAE, ABK, ABT, ADW ('88-'98)	CR4104XP(w/ lug)		MB5566XP		TW2010AM	
32	2.0L DOHC 16v 6A, ACE ('90-'96)	CR4104XP(w/ lug)		MB5566XP		TW2010AM	
33	2.0L DOHC 20v ALT ('00-'08)	CR4597XP(w/o lug)		MB5661XP		TW2010AM	
34	2.0L DOHC 16v AWA, AXW, BMB ('00-'08)	CR4597XP(w/o lug)		MB5661XP		TW2010AM	
35	2.0L DOHC 16v Turbo AXX, BGB, BUL, BWA, BWE ('04->)	CR4597XP(w/o lug)		MB5661XP		TW2010AM	
36	2.0L 10v JL, PS, KP, RT, SK, SL	CR 505XP		MB 605XP		TW2009AM	
37	2.0L 20v NM	CR 505XP		MB 605XP		TW2009AM	
38	2.0L SOHC/OHC, 10v HP, JS	CR 505XP		MB 605XP		TW2009AM	
39	2.0L 8v AXA, AUZ, AVA	CR4104XP(w/ lug)		MB5661XP		TW2010AM	
40	2.0L SOHC/OHC 8v AQY, AEG, BHY, ASU, APK	CR4104XP(w/ lug)		MB5661XP		TW2010AM	
41	2.2L SOHC/OHC 10v KM, KX, HY, HX, KU, KZ, PX, KV, JT	CR 505XP		MB 605XP		TW2009AM	
42	2.3L SOHC/OHC 10v NF, NG, PR, AAR	CR 505XP		MB 605XP		TW2009AM	
43	2.3L DOHC 20v 7A	CR 505XP		MB 605XP		TW2009AM	
44	2.5L 10v AAF, AEN, AET, AEU, AVT	CR 505XP		MB 605XP		TW2009AM	
45	2.5L SOHC/OHC 10v ACU, APL	CR 505XP		MB 605XP		TW2009AM	
46	2.8L VR6 R30 AAA, AES, AQP, AUE, AYL, BDE	CR6764XP		MB7089XP			
47	3.2L VR6 R32 AZZ, AXJ, BDL, BFH, BJS, BKK, BKJ, BUB, CFLA	CR6764XP		MB7089XP			
48	4.2L Audi R8 / RS6 FSI V8	CR 227XP		MB1322XP			
49		CR 227XPC		MB1322XPC			
50	5.2L Audi R8 V10 / Lamborghini Galardo / Huracan V10	CR 227XP		MB1322XP			
		CR 227XPC		MB1322XPC			
BMW							
51	1.6L SOHC 8v M40B16, M43B16	CR4042XP		MB5082XP			
52	1.6L SOHC 16v W10B16 Mini Cooper	CR4537XP			MB5667SI*		
53	1.6L SOHC 16v Super Charged W11B16 Mini Cooper	CR4600XP			MB5667SI*		
54	1.8L SOHC/DOHC 8v/16v M40B18, M42B18, M43B18	CR4042XP		MB5082XP			
55	1.9L SOHC/DOHC 8v/16v M43B19, M44B19	CR4042XP		MB5082XP			
56	2.0L DOHC 16v S14B20	CR4596XP					
57	2.0L SOHC/DOHC 12v/24v M20B20, M50B20, M52B20	CR6640XP		MB7039XP			

** Normal street bearings



Engine		Conrod Bearing Set XP Series	Conrod Bearing Set HP Series	Main Bearing Set XP Series	Main Bearing Set HP Series	Thrustwasher Set	Cam Bearings Set
BMW							
58	2.2L DOHC 24v M54B22	CR6640XP					
59	2.3L DOHC 16v S14B23	CR4596XP					
60	2.3L SOHC 12v M20B23	CR6640XP		MB7039XP			
61	2.5L DOHC 16v S14B25	CR4596XP					
62	2.5L SOHC/DOHC 12v/24v M20B25, M50B25, M52B25, M54B252.7L	CR6640XP		MB7039XP			
63	SOHC/DOHC 12v/24v M20B27, M50B27	CR6640XP		MB7039XP			
64	3.0L DOHC 24v M54B30	CR6640XP					
65	3.0L DOHC 24v S50B30 Euro	CR6854XP		MB7039XP			
66	3.0L DOHC 24v S50B30 Euro - for USA	CR6640XP		MB7039XP			
67	3.0L DOHC 24v N54B30 / N55B30	CR 222SV*			MB7776SI*		
68	3.2L DOHC 24v S50B32	CR6853XP		MB7039XP			
69	3.2L DOHC 24v S52B32	CR6640XP		MB7039XP			
70	3.2L DOHC 24v S54B32	CR6877XP		MB7039XP			
71	4.0L DOHC 32v S65B40A	CR 224SV*		MB5803XP			
72	5.0L DOHC 40v S85B50A	CR 224SV*		MB 637XP			
CHRYSLER							
73	2.4L 16v G4KC, F4KE "World Engine"	CR4668XP			MB5707SI*	TW1050AM	
74	2.4L 146 DOHC 16v EDZ SRT4 ('02-'05)	CR4256XP		MB5270XP			
75	3.5L 215 OHV 12v	CR6672XP		MB7723XP			
76	4.0L 245 OHV 12v	CR6672XP		MB7723XP			
77	4.3L 265 OHV 12v	CR6672XP		MB7723XP			
78	4.5L 273 OHV 16v V8	CR 805XPN CR 805XPNC		MB 558XP MB 558XPC			CS 512HP
79	5.2L 318 OHV 16v V8	CR 805XPN CR 805XPNC		MB 558XP MB 558XPC			CS 512HP
80	5.6L 340 OHV 16v V8	CR 805XPN CR 805XPNC		MB 558XP MB 558XPC			CS 512HP
81	5.7L 345 OHV 16v V8 Hemi ('03-->)	CR8032XPN		MB5659XP Single oil hole MB5840XP Two oil holes		TW1003AM	
82	5.7L 350 OHV 16v V8	CR 806XPND CR 806XPND	CR 806HPND		MB 555HP		
83	5.9L 360 OHV 16v V8	CR 805XPN CR 805XPNC			MB 517XP		
84	5.9L 361 OHV 16v V8	CR 806XPND CR 806XPND	CR 806HPND		MB 555HP	TW1003AM	
85	6.1L 370 OHV 16v V8 Hemi ('05-->)	CR8032XPN		MB5840XP			
86	6.3L 383 OHV 16v V8	CR 806XPND CR 806XPND	CR 806HPND		MB 555HP		
87	6.4L 392 OHV 16v V8 Hemi	CR8032XP		MB5840XP			
88	6.6L 400 OHV 16v V8	CR 806XPND CR 806XPND	CR 806HPND		MB 555HP		
89	6.7L 413 OHV 16v V8	CR 806XPND CR 806XPND	CR 806HPND				
90	7.0L 426 OHV 16v V8	CR 806XPND CR 806XPND	CR 806HPND	MB5116XP MB5116XPC	MB5116HP		CS 533HP
91	7.0L 426 OHV 16v V8 Hemi	CR 806XPND CR 806XPND	CR 806HPND	MB5116XP MB5116XPC	MB5116HP		CS 533HP
92	7.2L 440 OHV 16v V8	CR 806XPND CR 806XPND	CR 806HPND	MB5116XP MB5116XPC	MB5116HP		CS 533HP
FORD							
93	1.3L OHV 8v 273SE, 711M X Flow, 751M	CR 410XP		MB 512XP			
94	1.5L, 1.6L OHV 8v 116E Lotus	CR 410XP		MB 512XP			
95	1.6L/1.7L BDA, BDB, BDC, BDD	CR4540XP		MB 512XP			
96	2.0L DOHC 16v YB	CR4440XP		MB5672XP			
97	2.0L DOHC 16v Duratec	CR4515XP (for 47mm journal)		MB5442XP			
98	2.0L, 2.3L DOHC 16v EcoBoost	CR4604XP (for 52mm journal)		MB5442XP			
99	2.3L DOHC 16v Duratec	CR4507XP (for 50mm journal)		MB5442XP			
100	2.3L 140 Inline 4 SOHC 8v 2300 Stroker			MB 582XP (-> '90, for 2.591" Housing) MB5278XP ('89 ->, for 2.397" Housing)			
101	2.3L 144 OHV 12v Inline 6 Falcon	CR 618XP					
102	2.5L Turbo HYDA	CR 509XP		MB 612XP			
103	2.8L 170 OHV 12v Inline 6 Falcon	CR 618XP					
104	3.0L 188 OHV 12v Inline 6 Falcon	CR 618XP					
105	3.3L 200 OHV 12v Inline 6	CR 618XP		MB7703XP			
106	3.5L ECOBOOST V6	CR6888XP		MB4549XP			
107	3.9L 250 OHV 12v Inline 6	CR 618XP		MB7703XP			
108	4.0L DOHC 24v (Incl. Turbo) Inline 6	CR 618XP		MB7063XP			
109	4.0L SOHC 12v EB-ED, EF-EL	CR 618XP		MB7703XP			
110	4.0L SOHC 12v Intech	CR 618XP		MB7063XP			

** Normal street bearings



Engine		Conrod Bearing Set XP Series	Conrod Bearing Set HP Series	Main Bearing Set XP Series	Main Bearing Set HP Series	Thrustwasher Set	Cam Bearings Set
FORD							
111	4.2L 260 OHV 16v V8	CR 804XPN CR 804XPNC CR 804XPND	CR 804HPN	MB 529XP	MB 529HP		CS 514HP CS 514HPT
112	4.6L SOHC 16v Cast Iron Block, Romeo Vin W ('91-'10), X ('96-'04), V ('06-'10)	CR 868XPN CR 868XPNC	CR 868HPN	MB5353XP (upper shell centered lug) MB5353XPC	MB5353HP	lower flange 1 thrust washer	CS 604BB
113	4.6L SOHC 16v Windsor Vin 6 ('96-'03), W ('93-'10), X ('96-'04)	CR 868XPN CR 868XPNC	CR 868HPN	MB5280XP MB5280XPC	MB5280HP	set includes 3 thrust washers	CS 604BB
114	4.6L SOHC 24v Aluminum Block Vin 8 ('06-'10), H ('05-'10)	CR 868XPN CR 868XPNC	CR 868HPN	MB5283XP (upper shell offset lug) MB5283XPC	MB5283HP	lower flange1 thrust washer	CS 604BB
115	4.6L DOHC 32v Aluminum Block Vin H, R, V, Y ('96-'05)	CR 868XPN CR 868XPNC	CR 868HPN	MB5283XP (upper shell offset lug) MB5283XPC	MB5283HP	lower flange1 thrust washer	CS 605BB (DOHC up to '96) CS 606BB ('96->)
116	4.7L 289 OHV 16v V8	CR 804XPN CR 804XPNC CR 804XPND	CR 804HPN	MB 529XP	MB 529HP		CS 514HP CS 514HPT
117	5.0L 302 OHV 16v V8 Windsor	CR 804XPN CR 804XPNC CR 804XPND	CR 804HPN	MB 529XP	MB 529HP		CS 514HP CS 514HPT
118	5.0L 302 DOHC 32v V8 Coyote ('11-'13)	CR 868XPN CR 868XPNC	CR 868HPN	MB5734XP MB5734XPC			
119	5.4L SOHC 16v Windsor Vin 3 ('99-'04), L ('97-'10), Z ('98-'04)	CR 868XPN CR 868XPNC	CR 868HPN	MB5280XP MB5280XPC	MB5280HP	set includes 3 thrust washers	
120	5.4L SOHC 24v Windsor Vin 5 ('04-'10), V ('06-'10)	CR 868XPN CR 868XPNC	CR 868HPN	MB5280XP MB5280XPC	MB5280HP	set includes 3 thrust washers	
121	5.4L DOHC 32v In Tech Windsor Vin A ('99-'02), R ('01-'04)	CR 868XPN CR 868XPNC	CR 868HPN	MB5280XP MB5280XPC	MB5280HP	set includes 3 thrust washers	
122	5.4L GT500 Block	CR 868XPN CR 868XPNC		MB5824XP		set includes 3 thrust washers	
123	5.7L 351 OHV 16v V8 Cleveland	CR 813XPN		MB5503XP	MB5503HP		CS 516HP
124	5.7L 351 OHV 16v V8 Windsor	CR 814XPN		MB5505XP (77-'88)			CS 514HP CS 514HPT
125	6.2L 377 OHV 16v V8 Cleveland Stroker	CR8005XP		MB5503XP	MB5503HP		
126	7.0L 429		CR 874HP	MB5650XP (multi-bored) MB5650XPC	MB5650HP (multi-bored)		CS 517HP CS 517HPT
127	7.5L 460		CR 874HP	MB5650XP (multi-bored) MB5650XPC	MB5650HP (multi-bored)		CS 517HP CS 517HPT
GENERAL MOTORS							
128	2.0L, 2.2L, 2.4L 16v DOHC Ecotec	CR4363XP			MB5413CP*		
129	3.3L 200 12v V6	CR6618XP					
130	3.8L 229 12v V6 GNX	CR6664XP					
131	265, 283, 302, 327 OHV 16v V8 ('62-'67) Small journal	CR 803XPN CR 803XPNC CR 803XPND	CR 803HPN	MB 554XP			CS 507HP CS 507HPT
132	262, 265, 267, 302, 305, 307, 327, 350 OHV 16v V8 Small Block ('68-'96) Large journal	CR 807XPN CR 807XPNC CR 807XPND CR 807XPNDNC	CR 807HPN CR 807HPND	MB 557XP MB 557XPC	MB 557HP		CS 507HP CS 507HPT
133	348, 409 OHV 16v V8	CR 808XPN CR 808XPNC CR 808XPND CR 808XPNDNC	CR 808HPN CR 808HPND				
134	LS series 4.8L OHV 16v Vortec 5.3L OHV 16v Vortec 5.7L OHV 16v 6.0L OHV 16v (also Vortec) 6.2L OHV 16v (also Vortec)	CR 807XPN CR 807XPNC CR 807XPND CR 807XPNDNC	CR 807HPN	MB5013XP MB1328XP (flanged bearing pair) MB5013XPC	MB5013HP		CS5503HP CS5503HPT ('97-'02) CS5510HP CS5510HPT ('03-'10) CS5171HP CS5171HPT (06-'13 0.775" wide)
135	Dart LS Next Block	CR 807XPN CR 807XPNC CR 807XPND CR 807XPNDNC	CR 807HPN	MB5777XP			CS5172HP CS5172HPT
136	325, 350, 389, 400 Pontiac 3" main			MB5511XP	MB5511HP		
137	400 OHV 16v V8 Small Block	CR 807XPN CR 807XPNC CR 807XPND CR 807XPNDNC	CR 807HPN CR 807HPND	MB 509XP MB 509XPC	MB 509HP		CS 507HP CS 507HPT
138	366, 396, 402, 454, 502 OHV 16v V8 Big Block	CR 808XPN CR 808XPNC CR 808XPND CR 808XPNDNC	CR 808HPN CR 808HPND	MB 556XP MB 556XPC	MB 556HP MB1124HP (flanged bearing pair)		CS 524HP CS 524HPT

** Normal street bearings



Engine		Conrod Bearing Set XP Series	Conrod Bearing Set HP Series	Main Bearing Set XP Series	Main Bearing Set HP Series	Thrustwasher Set	Cam Bearings Set
HOLDEN							
139	138 OHV 12v Red Motor	CR6649XP					
140	149 OHV 12v Red Motor	CR6649XP					
141	161 OHV 12v Red Motor	CR6649XP					
142	173 OHV 12v Red Motor	CR6649XP					
143	179 OHV 12v	CR6649XP					
144	186 OHV 12v Red Motor	CR6649XP					
145	174 OHV 12v Blue Motor	CR6649XP		MB7704XP			
146	202 OHV 12v Red Motor	CR6649XP		MB7704XP			
147	202 OHV 12v Blue/Black Motor	CR6649XP		MB7704XP			
148	204 3.3L OHV 12v Holden LG7	CR6664XP		MB5737XP (set contains additional lower shells to fit different applications)			
149	231 3.8L OHV 12v Holden LN3, L27, L36, L67, L32	CR6664XP		MB5737XP (set contains additional lower shells to fit different applications)			
150	253 OHV 16v Red Motor	CR8007XP		MB5381XP			
151	253 OHV 16v Blue Motor	CR8007XP		MB5381XP			
152	308 OHV 16v Red Motor	CR8007XP		MB5381XP			
153	308 OHV 16v Blue Motor	CR8007XP		MB5381XP			
154	305 5.0L OHV 16v	CR8007XP		MB5381XP			
155	308 5.0L EFI OHV 16v	CR8007XP		MB5381XP			
156	348 OHV 16v EFI Stroker	CR8007XP		MB5381XP			
157	348 OHV 16v Gen III LS1	CR 807XPN CR 807XPNC CR 807XPND CR 807XPND C		MB5013XP MB5013XPC MB1328XP (flanged bearing pair)	MB5013HP		
158	355 OHV 16v Stroker			MB5381XP			
159	6.0L OHV 16v Gen IV L76	CR 807XPN CR 807XPNC CR 807XPND CR 807XPND C		MB5013XP MB5013XPC MB1328XP (flanged bearing pair)	MB5013HP		
160	6.0L OHV 16v Gen IV L98	CR 807XPN CR 807XPNC CR 807XPND CR 807XPND C		MB5013XP MB5013XPC MB1328XP (flanged bearing pair)	MB5013HP		
161	6.0L OHV 16v Gen IV LS2	CR 807XPN CR 807XPNC CR 807XPND CR 807XPND C		MB5013XP MB5013XPC MB1328XP (flanged bearing pair)	MB5013HP		
162	6.2L OHV 16v Gen IV LS3	CR 807XPN CR 807XPNC CR 807XPND CR 807XPND C		MB5013XP MB5013XPC MB1328XP (flanged bearing pair)	MB5013HP		
HONDA							
163	1.5L SOHC 8v/16v D15B, D15Z	CR4046XP					
164	1.6L DOHC 16v B16A	CR 439XP CR 439XPC CR 439XPD CR 439XPDC		MB5259XP MB5259XPC		TW 140AM	
165	1.6L DOHC 16v B16A, D16A, D16B, D16W, D16Y, D16Z, ZC	CR 439XP CR 439XPC CR 439XPD CR 439XPDC		MB5568XP		TW 140AM	
166	1.7L DOHC 16v B17A1	CR 439XP CR 439XPC CR 439XPD CR 439XPDC		MB5259XP MB5259XPC		TW 140AM	
167	1.7L SOHC 16v D17A, D17Z			MB5568XP		TW 140AM	
168	1.8L SOHC 12v A18A	CR 439XP CR 439XPC CR 439XPD CR 439XPDC		MB5168XP (for 50mm journal)			
169	1.8L DOHC 16v B18A	CR4287XP CR4287XPD CR4287XPDC CR 439XP		MB5259XP MB5259XPC		TW 140AM	
170	1.8L DOHC 16v B18A1	CR 439XPC CR 439XPD CR 439XPDC		MB5259XP MB5259XPC		TW 140AM	
171	1.8L DOHC 16v B18B1, B18B2	CR 439XP CR 439XPC CR 439XPD CR 439XPDC		MB5259XP MB5259XPC		TW 140AM	

** Normal street bearings



Engine		Conrod Bearing Set XP Series	Conrod Bearing Set HP Series	Main Bearing Set XP Series	Main Bearing Set HP Series	Thrustwasher Set	Cam Bearings Set
HONDA							
172	1.8L DOHC VTEC 16v B18C1, B18C5	CR 439XP CR 439XPC CR 439XPD CR 439XPDC		MB5259XP MB5259XPC		TW 140AM	
173	1.9L SOHC 12v ES, ET	CR 439XP CR 439XPC CR 439XPD CR 439XPDC		MB5259XP MB5259XPC		TW 140AM	
174	1.9L SOHC 16v F18B	CR 439XP CR 439XPC CR 439XPD CR 439XPDC					
175	2.0L SOHC 12v A20A	CR 439XP CR 439XPC CR 439XPD CR 439XPDC		MB5168XP (for 50mm journal)			
176	2.0L SOHC 12v B20A3	CR 439XP CR 439XPC CR 439XPD CR 439XPDC		MB5568XP		TW 140AM	
177	2.0L DOHC 16v B20A5, B21A1	CR4033XP		MB5568XP		TW 140AM	
178	2.0L DOHC 16v B20B3, B20B8	CR 439XP CR 439XPC CR 439XPD CR 439XPDC		MB5259XP MB5259XPC		TW 140AM	
179	2.0L DOHC 16v B20B4, B20Z2	CR4033XP		MB5259XP MB5259XPC		TW 140AM	
180	2.0L DOHC 16v F20B	CR4033XP		MB5568XP			
181	2.0L DOHC 16v F20C	CR4033XP		MB5673XP		TW 140AM	
182	2.0L DOHC 16v K20A2, K20Z1	CR4542XP CR4542XPC CR4542XPD CR4542XPDC		MB5259XP MB5259XPC		TW 140AM	
183	2.0L DOHC 16v K20A3	CR4541XP		MB5259XP MB5259XPC		TW 140AM	
184	2.1L DOHC 16v B21A1	CR4033XP		MB5568XP		TW 140AM	
185	2.2L DOHC 16v F22C	CR4033XP		MB5673XP		TW 140AM	
186	2.2L DOHC 16v H22A4, H22Z	CR4033XP		MB5568XP		TW 140AM	
187	2.2L DOHC 16v H22A1	CR4033XP		MB5168XP (for 50mm journal)		TW 152AM	
188	2.2L SOHC 16v F22A1, F22A4, F22B1, F22B2, F22B6, F22A6	CR4033XP		MB5168XP (for 50mm journal)		TW 152AM	
189	2.3L DOHC 16v H23A1	CR4033XP		MB5168XP (for 50mm journal)		TW 152AM	
190	2.3L SOHC 16v F23A, F23Z	CR4541XP		MB5568XP		TW 140AM	
191	2.4L DOHC 16v K24A, K24Z1	CR4542XP CR4542XPC CR4542XPD CR4542XPDC		MB5259XP MB5259XPC		TW 140AM	
IHC TRACTOR							
192	IHC Tractor 5.9L DT361	CR1629XP		MB7747XP			
193	IHC Tractor 6.7L DT407	CR1629XP		MB7747XP			
HYUNDAI							
194	2.4L 16v G4KC, F4KE "World Engine"	CR4668XP			MB5707SI*	TW1050AM	
195	2.0L 16v G4KF	CR4634XP		MB5771XP			
JAGUAR							
196	2.8L XJ6	CR 697XP		MB 788XP			
197	3.4L XK6	CR 697XP		MB 788XP			
198	3.8L MK, XK	CR 697XP		MB 788XP			
199	4.2L XJ	CR 697XP		MB 771XP			
LADA							
203	12L, 1.5L 1973-	CR4007XP		MB5546XP			
LANCIA							
200	2.0L 8v/16v Delta HF Integrale	CR4601XP		MB5730XP			
MAZDA							
201	1.5L DOHC 16v ZL-VE	CR4002XP		MB5304XP		TW 133AM	
202	1.5L DOHC 16v Z5-DE			MB5304XP		TW 133AM	

** Normal street bearings



Engine		Conrod Bearing Set XP Series	Conrod Bearing Set HP Series	Main Bearing Set XP Series	Main Bearing Set HP Series	Thrustwasher Set	Cam Bearings Set
MAZDA							
203	1.6L SOHC 8v B6, B6F	CR4002XP		MB5304XP		TW 133AM	
204	1.6L DOHC 16v B6D	CR4002XP		MB5304XP		TW 133AM	
205	1.6L DOHC 16v Turbo B6-T	CR4002XP		MB5304XP		TW 133AM	
206	1.6L SOHC 16v B6-2E/ME	CR4002XP		MB5304XP		TW 133AM	
207	1.6L DOHC 16v ZM-DE	CR4002XP		MB5304XP		TW 133AM	
208	1.6L DOHC ZMD	CR4002XP		MB5304XP		TW 133AM	
209							
210	1.8L DOHC 16v BP-T	CR4002XP		MB5304XP		TW 133AM	
211	1.8L DOHC 16v BPD	CR4002XP		MB5304XP		TW 133AM	
212	1.8L DOHC 16v BP-Z3	CR4002XP		MB5304XP		TW 133AM	
213	1.8L DOHC 16v Turbo BP-Z3T	CR4002XP		MB5304XP		TW 133AM	
214	1.8L DOHC 16v BP-4W	CR4002XP		MB5304XP		TW 133AM	
215	1.8L DOHC 16v BP-ZE	CR4002XP		MB5304XP		TW 133AM	
216	2.0L DOHC 16v LF MZR	CR4515XP (for 47mm journal)		MB5442XP			
217	2.3L DOHC 16v L3-VDT MZR DISI Turbo Duratec	CR4604XP (for 52mm journal)		MB5442XP			
218	2.3L DOHC 16v Duratec, MZR L3V, MZR L3X, Duratec Hybrid	CR4507XP (for 50mm journal)		MB5442XP			
MITSUBISHI							
219	1.5L DOHC 16v 4G91	CR4119XP		MB5176XP		TW 143AM	
220	1.6L SOHC 8v 4G32/G32B	CR4481XP		MB5227XP			
221	1.6L DOHC 16v (Incl. Turbo) 4G61, 4G61-T	CR4481XP		MB5227XP			
222	1.6L SOHC/DOHC 16v 4G92	CR4119XP		MB5176XP		TW 143AM	
223	1.7L SOHC 8v 4G35	CR4481XP		MB5227XP			
224	1.8L SOHC 8v 4G37	CR4481XP		MB5227XP			
225	1.8L SOHC/DOHC (Incl. Turbo) 4G93, 4G93-T	CR4119XP		MB5176XP		TW 143AM	
226	1.8L SOHC 8v (Incl. Turbo) 4G62/G62B, G62BT	CR4481XP		MB5227XP			
227	1.8L SOHC 8v Diesel 4D65	CR4481XP		MB5227XP			
228	1.8L SOHC 8v Turbo Diesel 4D65-T	CR4481XP		MB5227XP			
229	2.0L SOHC 8v Diesel 4D68	CR4120XP		MB5315XP			
230	2.0L 4G63 (->92)	CR4481XP		MB5227XP			
231	2.0L 4G63 EVO I-IV ('92->)	CR4120XP		MB5209XP (with flanged brg)			
		CR4120XP		MB5315XP		TW 173AM	
232	2.0L 4G63 EVO V-IX ('97-'07)	CR4120XP		MB5315XP		TW 173AM	
233	2.0L DOHC 16v Turbo 4B11T Evo X ('07->)	CR4586XP		MB5722XP		TW1029AM	
234	2.0L 4G94	CR4607XP		MB5176XP			
235	2.4L 4G64 EVO I-IV ('92->)	CR4120XP		MB5209XP (with flanged brg)		TW 143AM	
		CR4120XP		MB5315XP		TW 173AM	
236	2.4L 4G64 EVO V-IX ('97-'07)	CR4120XP		MB5315XP		TW 173AM	
237	2.4L 4G64 (->92)	CR4481XP		MB5227XP			
238	2.4L DOHC 16v 4G69	CR4120XP		MB5315XP			
NISSAN							
239	1.6L DOHC 16v CA16DE	CR 407XP		MB5232XP			
240	1.6L DOHC 16v CA16DET, CA18DET, CA20ET	CR 407XP		MB5232XP			
241	1.6L DOHC 16v CA16DET, CA18DET, CA20ET	CR 407XP		MB5232XP			
242	1.7L SOHC 8v Diesel CD17	CR 407XP		MB5232XP			
243	1.8L DOHC 16V (Incl. Turbo) CA18DE, CA18DET	CR 407XP		MB5232XP			
244	2.0L SOHC 8v CA20E, CA20S	CR 407XP		MB5232XP			
245	2.0L SOHC 8v Diesel (Incl. Turbo) CD20, CD20-T			MB5232XP			
246	2.0L DOHC 24v (Incl. Turbo) RB20DE, RB20DET	CR6752XP		MB7008XP			
247	2.0L DOHC 16v (Incl. Turbo) SR20DE, SR20DET	CR4136XP		MB5243XP			
248	2.0L SR20DET (GTiR), 16v	CR4587XP		MB5721XP		TW 139AM	
249	2.0L DOHC 24v VQ20DE	CR6676XP		MB4058XP		TW 271AM	
250	2.4L SOHC 12V KA24DE	CR4065XP		MB5595XP			
251	2.5L DOHC 24v (Incl. Turbo) RB25DET, RB25DETT	CR6697XP		MB7008XP			
252	2.5L DOHC 24v VQ25DE, VQ25DET	CR6676XP		MB4058XP		TW 271AM	
253	2.6L DOHC 24v Turbo RB26DETT	CR6697XP		MB7092XP			
254	3.0L SOHC 12v (Incl. Turbo) RB30E, RB30ET	CR6676XP		MB7008XP			
255	3.0L DOHC 24v VQ30DE, VQ30DET	CR6676XP		MB4058XP		TW 271AM	
256	3.0L SOHC 12v VG30i	CR6676XP		MB4104XP			
257	3.0L DOHC 24v Twin Turbo VG30DETT	CR6676XP		MB4104XP			
258	3.3L SOHC 12v VG33E	CR6676XP		MB4104XP		TW 271AM	
359	3.5L DOHC 24v VQ35DE	CR6775XP		MB4058XP		TW1042AM	
360	3.5L VQ35HR	CR6897XP		MB4524XP		TW 271AM	
361	3.7L VQ37HR	CR6897XP		MB4524XP		TW1042AM	
362	3.8L DOHC 24v Twin Turbo VR38DETT	CR6870XP CR6870XPC CR6870XPND		MB4524XP MB4524XPC		TW1042AM	
363	4.5L VK45DD, VK45DE	CR8051XP		MB5770XP			
364	4.8L TB48DE	CR6715XP		MB7782XP			
365	5.6L VK56DE, VK56VD	CR8051XP		MB5770XP			

** Normal street bearings



Engine		Conrod Bearing Set XP Series	Conrod Bearing Set HP Series	Main Bearing Set XP Series	Main Bearing Set HP Series	Thrustwasher Set	Cam Bearings Set
OPEL							
366	1.6L SOHC 8v 16N, 16SH	CR4017XP		MB5179XP			
367	1.6L SOHC 8v Diesel 16D, 16DA	CR4017XP		MB5179XP			
368	1.7L SOHC 8v Diesel 17D, 17DR	CR4017XP		MB5179XP			
369	1.8L 18SV	CR4017XP		MB5179XP			
370	1.8L SOHC 8v 18E, 18N, 18NV, 18S, 18SE, 18SEH	CR4017XP		MB5179XP			
371	1.8L SOHC 8v C18NE, C18NV, C18NT, C18NZ	CR4017XP		MB5179XP			
372	1.8L DOHC 16v C18XE, C18XEL	CR4017XP		MB5179XP			
373	1.8L SOHC 8v E18NV, E18NVR	CR4017XP		MB5179XP			
374	1.8L SOHC 8v S18NV	CR4017XP		MB5179XP			
375	1.8L DOHC 16v X18XE	CR4017XP		MB5179XP			
376	2.0L SOHC 16v C20SED	CR4017XP		MB5179XP			
377	2.0L SOHC 8v 20SE, 20SEH, 20SER, C20NE, C20LE, LT2, LT3	CR4017XP		MB5179XP			
378	2.0L DOHC 16v 20XE	CR4017XP		MB5179XP			
379	2.0L DOHC 16v Turbo C20LET	CR4017XP		MB5179XP			
380	2.0L DOHC 16v C20XE	CR4017XP		MB5179XP			
381	2.0L DOHC 16v X20SE, X20XEV, X20SED	CR4017XP		MB5179XP			
382	2.0L DOHC 16v LNF, LSJ	CR4363XP			MB5413CP*		
383	2.2L DOHC 16v C22SEL	CR4017XP		MB5179XP			
384	2.2L DOHC 16v X22SE, X22XE	CR4017XP		MB5179XP			
385	2.2L DOHC 16v Y22SE	CR4017XP		MB5179XP			
386	2.2L DOHC 16v Z 22 SE (Ecotec)	CR4363XP			MB5413CP*		
387	2.2L DOHC 16v L42, L61, LAP	CR4363XP			MB5413CP*		
388	2.4L DOHC 16v LAF, LAT, LE5, LE9	CR4363XP			MB5413CP*		
PEUGEOT							
389	1.3L SOHC 8v TU2.4, TU2J2	CR4493XP			MB5569AM*		
390	1.4L SOHC 8v TU3A, TU3CP, TU3M, TU3S	CR4493XP			MB5569AM*		
391	1.4L SOHC 8v TU3.2, TU3J2/Z, TU3JP ('88->)	CR4493XP		MB5729XP			
392	1.4L SOHC 8v TU3JP ('05->)			MB5729XP			
393	1.4L SOHC 8v XY6B, XY7, XY8	CR4493XP			MB5508AM*		
394	1.5L SOHC 8v Diesel TUD5			MB5729XP			
395	1.6L SOHC/DOHC 8v/16v TU5J2, TU5J4, TU5JP, TU5JP4	CR4493XP		MB5729XP			
396	1.6L SOHC 8v XU5J, XU5JP	CR4493XP		MB5729XP			
397	1.8L DOHC 16v EW7J4	CR4603XP			MB5760SI*		
398	1.8L SOHC 8v XU7JB, XU7JP	CR4603XP			MB5760SI*		
399	1.8L DOHC 16v XU7JP4	CR4603XP			MB5760SI*		
400	1.9L SOHC 8v XU92C, XU9S	CR4602XP			MB5182AM*		
401	2.0L DOHC 16v EW10A, EW10D, EW10J4, EW10J4S	CR4603XP			MB5760SI*		
402	2.2L DOHC 16v EW12J4	CR4603XP			MB5760SI*		
403	2.0L DOHC 16v XU10J4, XU10J4RS, XU10J4TE	CR4602XP			MB5129AM*		
404	2.0L SOHC 8v XU102C, XU10J2, XU10J2TE, XU10M	CR4602XP			MB5129AM*		
PORSCHE							
405	2.0L OHC (inc. Turbo) 911, 914	CR6855XP					
406	2.2L OHC 911	CR6855XP					
RENAULT							
407	1.2L SOHC 8v 129-5/XZ7R R14	CR4493XP			MB5508AM*		
408	1.4L SOHC 8v 150-X5J R14	CR4493XP			MB5508AM*		
409	1.7L SOHC 8v F1N, F2N	CR4019XP		MB5180XP			
410	1.7L SOHC 8v F2R	CR4019XP		MB5180XP			
411	1.7L SOHC 8v F3N	CR4019XP		MB5180XP			
412	1.8L SOHC 8v F3P	CR4019XP		MB5180XP			
413	2.0L SOHC 8v F3R	CR4019XP		MB5180XP			
414	1.8L DOHC 16v F7P	CR4019XP		MB5180XP			
415	2.0L DOHC 16v F7R	CR4019XP		MB5180XP			
416	1.6L SOHC 8v Diesel F8M	CR4019XP		MB5180XP			
417	1.9L SOHC 8v Diesel, Turbo Diesel F8Q	CR4019XP		MB5180XP			
SAAB							
418	2.0L B204, B205	CR4606XP		MB5732XP			
419	2.3L B234, B235	CR4606XP		MB5732XP			
SUBARU							
420	2.0L DOHC 16v (Incl. Turbo) EJ20 WRX/STI	CR4125XPG (for 52mm journal) CR4125XPGC		MB5382XPG (flange in position 5) MB5382XPGC MB5739XPG (housing bore + .002") MB5740XPG (housing bore + .005")			
		CR4280XP (for 48mm journal)		MB5220XP (flange in position 3)			
421	2.0L 16v FA20	CR4616XPG CR4616XPGC		MB5745XPG MB5745XPGC			
422	2.0L 16v FB20	CR4622XP		MB5745XPG MB5745XPGC			

** Normal street bearings



Engine		Conrod Bearing Set XP Series	Conrod Bearing Set HP Series	Main Bearing Set XP Series	Main Bearing Set HP Series	Thrustwasher Set	Cam Bearings Set
SUBARU							
423	2.2L SOHC 16v/DOHC 16v (Incl. Turbo) EJ22 WRX/STI	CR4125XPG (for 52mm journal) CR4125XPGC		MB5382XPG (flange in position 5) MB5382XPGC MB5739XPG (housing bore + .002") MB5740XPG (housing bore + .005")			
		CR4280XP (for 48mm journal)		MB5220XP (flange in position 3)			
424	2.5L 16v FB25	CR4622XP		MB5745XPG			
425	2.5L SOHC 16v/DOHC 16v (Incl. Turbo) EJ25 WRX/STI	CR4125XPG (for 52mm journal) CR4125XPGC		MB5382XPG (flange in position 5) MB5382XPGC MB5739XPG (housing bore + .002") MB5740XPG (housing bore + .005")			
		CR4280XP (for 48mm journal)		MB5220XP (flange in position 3)			
426	3.0L DOHC 24v EZ30, EZ30D	CR6874XP		MB7772XP			
SUZUKI							
427	1.0L GSXR 1000	CR4661XP		MB5821XP			
428	1.3L GSXR 1300 Hayabusa	CR4660XP		MB5819XP			
429	1.3L SOHC 8v G13A	CR4605XP		MB5731XP		TW 134AM	
430	1.3L DOHC 16v G13B	CR4605XP		MB5731XP		TW 134AM	
431	1.3L SOHC 16v G13BB	CR4605XP		MB5731XP		TW 134AM	
432	1.3L SOHC 8v G13BA	CR4605XP		MB5731XP		TW 134AM	
433	1.5L DOHC 16v M15A	CR4594XP		MB5727XP			
434	1.6L DOHC 16v M16A	CR4594XP		MB5727XP			
435	1.8L DOHC 16v M18A	CR4594XP		MB5727XP			
TOYOTA							
436	1.3L SOHC 8 v 2A, 2A-LC			MB5527XP		TW 231AM	
437	1.4L DOHC 16v 6A-FC			MB5527XP		TW 231AM	
438	1.5L SOHC 8 v 3A, 3A-C, 3A-U			MB5527XP		TW 231AM	
439	1.5L DOHC 16v 5A-F, 5A-FE			MB5527XP		TW 231AM	
440	1.6L SOHC 8v 4A-C, 4A-LC			MB5527XP		TW 231AM	
441	1.6L DOHC 16v 4A-F, 4A-FE			MB5527XP		TW 231AM	
442	1.6L DOHC 16v/20v 4A-GE	CR4032XP		MB5527XP		TW 231AM	
443	1.6L DOHC 16v 4A-GEC, 4A-GELC	CR4032XP		MB5527XP		TW 231AM	
444	1.6L DOHC 16v Supercharged 4A-GZE	CR4032XP		MB5527XP		TW 231AM	
445	1.8L SOHC 8v 1S			MB5554XP		TW 226AM	
446	1.8L DOHC 16v 4S-FE			MB5554XP		TW 226AM	
447	1.8L DOHC 16v 7A-FE			MB5527XP		TW 231AM	
448	1.8L DOHC 16v 2ZZ-GE	CR4608XP		MB5375XP		TW 185AM	
449	2.0L 4U-GSE	CR4616XPG CR4616XPGC		MB5745XPG MB5745XPGC			
450	2.0L SOHC 8v 2S, 2S-E			MB5554XP		TW 226AM	
451	2.0L DOHC 16v 3S-FC, 3S-FE			MB5554XP		TW 226AM	
452	2.0L DOHC 16v (Incl. Turbo) 3S-GE, 3S-GTE	CR4209XP		MB5554XP		TW 226AM	
453	2.2L DOHC 16v 5S-FE			MB5554XP		TW 226AM	
454	2.5L DOHC 24v (Incl. Twin Turbo) 1JZ-GE, 1JZ-GTE	CR6754XP CR6754XPC		MB7084XP MB7084XPC		TW 284AM	
455	3.0L DOHC 24v (Incl. Twin Turbo) 2JZ-GE, 2JZ-GTE	CR6754XP CR6754XPD CR6754XPC CR6754XPDC		MB7084XP MB7084XPC		TW 284AM	
456	4.0L DOHC 32v 1UZ-FE	CR 888XP		MB5286XP			
457	4.3L DOHC 32v 3UZ-FE	CR 888XP		MB5286XP			
458	4.5L DOHC 24v 1FZ-FE	CR6727XP		MB7049XP			
459	4.7L DOHC 32v 2UZ-FE	CR 888XP		MB5286XP			
VOLKSWAGEN							
460	See under AUDI/VOLKSWAGEN						
VOLVO							
461	2.0L SOHC 8v (Incl. Turbo) B200	CR4599XP					
462	2.0L DOHC 16v (Incl. Turbo) B204	CR4599XP					
463	2.0L DOHC 10v B5202	CR 509XP		MB 612XP			
464	2.3L SOHC 8v (Incl. Turbo) B230	CR4599XP					
465	2.3L DOHC 16v B234	CR4599XP					

** Normal street bearings



INTERCHANGE LIST:

ACL int.	King_Fam#
1B5562H	CR 505XP
4B1060H	CR4540XP
4B1110H	CR4595XP
4B1146H	CR4481XP
4B1185H	CR4120XP
4B1236H	CR4586XP
4B1490H	CR4042XP
4B1568H	CR4596XP
4B1606H	CR4104XP
4B1609H	CR4597XP
4B1630H	CR 407XP
4B1780H	CR4032XP
4B1856H	CR4608XP
4B1906H	CR4541XP
4B1912H	CR4033XP
4B1925H	CR4287XP
4B1946H	CR 439XP
4B1956H	CR4046XP
4B1972H	CR4542XP
4B2010H	CR4606XP
4B2166H	CR4440XP
4B2322H	CR4017XP
4B2726H	CR4599XP
4B2746	CR4065XP
4B2902H	CR4600XP
4B2903H	CR4537XP
4B2904H	CR4601XP
4B2960H	CR4136XP
4B2976H	CR4587XP
4B4390H	CR4515XP
4B603H	CR 410XP
4B7700H	CR4602XP
4B7712H	CR4493XP
4B7736H	CR4603XP
4B7820H	CR4019XP
4B8036H	CR4119XP
4B8170H	CR4507XP
4B8172H	CR4604XP
4B8296H	CR4125XPG
4B8310H	CR4616XPG
4B8320H	CR4280XP
4B8336H	CR4605XP
4B8351H	CR4002XP
4B8366H	CR4209XP
4B8440H	CR4594XP
4M2505H	MB4524XP
4M2633H	MB4058XP
4M2737H	MB4104XP
4SM2222	MB5737XP
5M1010H	MB5503XP
5M1038H	MB 509XP
5M1039H	MB5650XP
5M1112H	MB 511XP
5M1117H	MB 582XP
5M1144H	MB5227XP
5M1186H	MB5209XP
5M1219H	MB5315XP
5M1237H	MB5722XP
5M1432H	MB5505XP
5M1538H	MB5082XP
5M1538H	MB5578XP
5M1633H	MB5232XP
5M1644H	MB5566XP
5M1695H	MB5527XP
5M1743H	MB5278XP
5M1857H	MB5375XP
5M1913H	MB5673XP
5M1957H	MB5568XP
5M1959H	MB5259XP
5M2152H	MB 512XP
5M2167H	MB5672XP
5M2220H	MB5659XP
5M2747H	MB5595XP
5M2797H	MB5729XP
5M2908H	MB5730XP
5M2964H	MB5243XP
5M2975H	MB5721XP
5M429H	MB 554XP
5M5647H	MB5283XP
5M590H	MB 529XP
5M7296H	MB5280XP

[illegible]

<i>Clevite Int.</i>	<i>King_Fam#</i>
CB-1120HN(4)	CR4481XP
CB-1227H(6)	CR6618XP
CB-1227H(8)	CR8005XP
CB-1353H(4)	CR 439XP
CB-1426H(4)	CR4104XP
CB-1442HN(8)	CR 868XPN
CB-1442HNNK(8)	CR 868XPNC
CB-1453H(4)	CR4002XP
CB-1461HN(4)	CR4046XP
CB-1589H(4)	CR4065XP
CB-1628H(6)	CR6754XP
CB-1629H(4)	CR4136XP
CB-1643H(4)	CR4120XP
CB-1657H(4)	CR4125XPG
CB-1657HK(4)	CR4125XPGC
CB-1663H(8)	CR8028XP
CB-1780H(4)	CR4033XP
CB-1785H(4)	CR4287XP
CB-1808HN(8)	CR8032XPN
CB-1813H(4)	CR4256XP
CB-1838H(4)	CR4507XP
CB-1840H(4)	CR4515XP
CB-1856HN(8)	CR 867XPN
CB-1861H(4)	CR4542XP
CB-1869H(6)	CR6870XP
CB-1918H(4)	CR4586XP
CB1925H(4)	CR4604XP
CB-481HN(8)	CR 805XPN
CB-481HNNK(8)	CR 805XPNC
CB-527HN(8)	CR 806XPND
CB-634HN(8)	CR 804XPN
CB-663HN(8)	CR 807XPN
CB-663HNDK(8)	CR807XPNDNC
CB-663HNNK(8)	CR 807XPNC
CB-675H(1)	CR1629XP
CB-743HN(8)	CR 808XPN
CB-743HNDK(8)	CR808XPNDNC
CB-743HNNK(8)	CR 808XPNC
CB-745HN(8)	CR 803XPN
CB-831HN(8)	CR 814XPN
CB-927HN(8)	CR 813XPN
MS-1038HK	MB 509XPC
MS-1010H	MB5503XP
MS-1038H	MB 509XP
MS-1039H	MB5650XP
MS-1277HG	MB5116XP
MS-1432H	MB5505XP
MS-1802H	MB5304XP
MS-1804H	MB5568XP
MS-1949H	MB5595XP
MS-2007H	MB5353XP
MS-2014H	MB7084XP
MS-2015H	MB5243XP
MS-2039H	MB5209XP
MS-2095H	MB5259XP
MS-2199H	MB5013XP
MS-2199HK	MB5013XPC
MS-2202H	MB5280XP
MS-2220H	MB5659XP
MS-2245H	MB5442XP
MS-2258H	MB5382XPG
MS-2258HK	MB5382XPGC
MS-2259H	MB5283XP
MS-2261H	MB5315XP
MS-2279H	MB5270XP
MS-2292H	MB5734XP
MS-2307H	MB5722XP
MS-2309H	MB5673XP
MS-2321H	MB5777XP
MS-2348H	MB4524XP
MS-429H	MB 554XP
MS-540H	MB 558XP
MS-540HK	MB 558XPC
MS-590H	MB 529XP
MS-829H	MB 556XP
MS-829HK	MB 556XPC
MS-909H	MB 557XP
MS-909HK	MB 557XPC



- 1 Bearing types:
 - MB - Main bearing set
 - CR - Con rod bearing set
 - CS - Camshaft bearing set
 - TW - Thrust washer set



- 2 Number of pairs in a set

- 3 Random code

- 4 Material construction:

Main & Rod bearing suffixes

- HP - Bimetal aluminum silicon alloy
- XP - Trimetal copper-lead

Thrust washer suffix

- AM - Aluminum based material

Cam bearing suffix

- BB - Lead base Babbitt material
- HP - Micro Babbitt chill cast & burnished construction
- HPT - HP construction with fluoropolymer coating

- 5 Bearing features:

- N - narrowed
- D - dowel hole



- 6 Dimension/undersize e.g "STD" for standard, X equals .001" extra clearance

Dimension sizes:

Bearing size inches	STDX	STD	.001"	010X	.010"	.011"	020X	.020"	.021"	.030"
Bearing size metric	STDX	STD	.025		0.25			0.5		0.75
Crankshaft undersize	0	0	0	-.010"	-.010"	-.010"	-.020"	-.020"	-.020"	-.030"
Additional shell thickness (on nominal)	-.0005"	0	+.0005"	+.0045"	+.005"	+.0055"	+.0095"	+.010"	+.0105"	+.015"

- 7 Item barcode

- 8 i-King code for online verification and warranty activation





www.kingracebearings.com

©2018-2019 King Engine Bearings

pMax Black™, pMaxKote™ Bull's Eye Tolerance™, ElliptiX™, U-Groove™, EccentriX™ SecureBond™ and RadiaLock™ are trademarks of King Engine Bearings. The information in this brochure contains general performance descriptions subject to engine customization, which therefore may not always apply as described, or may change due to product developments.

MRK-RC003 REV-04

